



2019 / 2020
DiaDent Group International

Welcome to DiaDent

Passion for Innovation

DiaDent is one of the leading Endodontic supply companies in the dental industry since 1985. For more than 34 years, DiaDent has been dedicated to making a better and high-quality dental products through our passion for the Innovation and leads the global market in high-advanced Endodontic items manufacturing and supplying.

From its inception as exporting Gutta Percha Points and Paper Points, DiaDent has grown to become a global leader, specializing in Endodontic devices and materials. DiaDent's innovative and reliable items, services and processes are recognized as the world's brand, today DiaDent has been exporting them to over 900 dealers in 127 countries all around the globe. DiaDent is taking the world in different systems with the highest standards so that DiaDent can more effectively contribute to create new markets and continue to make a responsible approach to the global business. All of DiaDent's products are inspected by a strict Quality Management System following the ISO 13485 standard .

Always striving to be better and innovative, DiaDent puts in our utmost efforts to strengthen R&D part to develop brand-new dental devices and items. Our products from DiaDent's R&D part lead us to the global market in high-tech dental manufacturing. Through innovative, reliable products and services and a responsible approach to the business and collaboration with our partners and customers, DiaDent will continue to see every challenge as an opportunity and we will do the best to be perfectly positioned as one of the world's recognized leaders in the dental industry.

Everyone here at DiaDent would like to thank you, our valued customers and business partners, for your continued support and loyalty. We wish everyone another happy and prosperous year ahead.

Sincerely,

DiaDent Group International

DiaDent's Network

DiaDent Group International (Korea & International)

16, Osongsaengmyeong 4-ro, Osong-eup, Heungdeok-gu Cheongju-si
Chungcheong buk-do, 28161, South Korea
Tel) 82-43-266-2315 Fax) 82-43-262-8658
E-mail: diadent@diadent.co.kr

DiaDent Group International Inc. (Canada & USA)

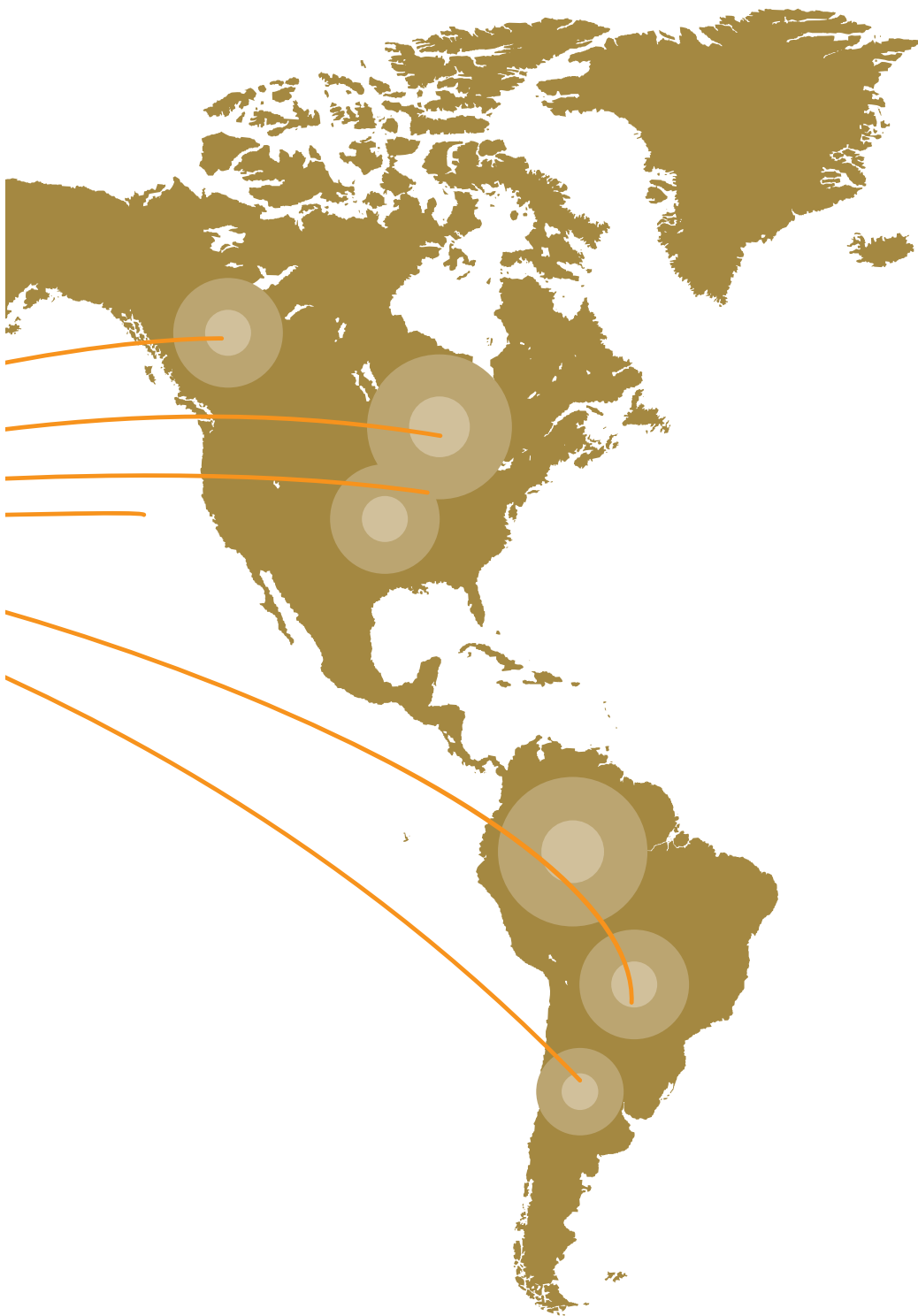
11-3871 North Fraser Way, Burnaby B.C, Canada V5J 5G6
Tel) 1-604-451-8851 Fax) 1-604-451-8865
E-mail: diadent@diadent.com

DiaDent Europe B.V (Europe)

Antennestraat 70, 1322 AS Almere, the Netherlands
Tel) 31-36-549-8607 Fax) 31-36-536-7317
E-mail: diadent@diadent europe.com



DiaDent's innovative and reliable items, services and processes are recognized as the world's brand, today DiaDent has been exporting them to over 900 dealers in 127 countries all around the globe.



| | |
|----------------------|-------------------|
| ALBANIA | LITHUANIA |
| ALGERIA | MACEDONIA |
| ARMENIA | MADAGASCAR |
| ARGENTINA | MALAYSIA |
| AUSTRALIA | MALI |
| AZERBAIJAN | MALTA |
| AUSTRIA | MAURITIUS |
| BAHRAIN | MEXICO |
| BANGLADESH | MOLDOVA |
| BELARUS | MONGOLIA |
| BELGIUM | MONTENEGRO |
| BOSNIA & HERZEGOVINA | MOROCCO |
| BRAZIL | MYANMAR |
| BRUNEI | NETHERLANDS |
| BULGARIA | NEW ZEALAND |
| CANADA | NEPAL |
| CAMBODIA | NICARAGUA |
| COSTA RICA | NIGERIA |
| CURACAO | NORWAY |
| CHILE | OMAN |
| CHINA | PAKISTAN |
| COLOMBIA | PALESTINE |
| CROATIA | PANAMA |
| CYPRUS | PAPUA NEW GUINEA |
| CZECH REPUBLIC | PARAGUAY |
| DENMARK | PERU |
| DOMINICAN REPUBLIC | PHILIPPINES |
| ECUADOR | POLAND |
| EGYPT | POLYNESIA |
| EL SALVADOR | PORTUGAL |
| ESTONIA | QATAR |
| ETHIOPIA | REUNION ISLAND |
| FINLAND | ROMANIA |
| FRANCE | RUSSIA |
| GEORGIA | RWANDA |
| GERMANY | SAUDI ARABIA |
| GHANA | SENEGAL |
| GREECE | SERBIA |
| GUATEMALA | SINGAPORE |
| HONG KONG | SLOVAKIA |
| HONDURAS | SLOVENIA |
| HUNGARY | SOUTH AFRICA |
| INDIA | SPAIN |
| INDONESIA | SRI LANKA |
| IRAN | SUDAN |
| IRAQ | SWEDEN |
| IRELAND | SWITZERLAND |
| ISRAEL | SYRIA |
| ITALY | TAIWAN |
| JAMAICA | THAILAND |
| JAPAN | TRINIDAD & TOBAGO |
| JORDAN | TUNISIA |
| KAZAKHSTAN | TURKEY |
| KENYA | U.A.E |
| KOREA | UGANDA |
| KOSOVO | U.K |
| KUWAIT | UKRAINE |
| KYRGYZSTAN | U.S.A |
| LAOS | URUGUAY |
| LATVIA | UZBEKISTAN |
| LEBANON | VENEZUELA |
| LIBYA | VIETNAM |
| LIECHTENSTEIN | YEMEN |

INDEX

ROOT CANAL OBTURATION

07 ~ 23

COSMETIC & RESTORATIVES

24 ~ 33

ENDODONTIC INSTRUMENTS

34 ~ 47

MISCELLANEOUS ITEMS

48 ~ 51

- Millimeter Marked Gutta Percha Points
- Special Taper Gutta Percha Points
- Millimeter Marked Paper Points
- Special Taper Paper Points
- Temporary Filling Materials
- Diapex Plus (Premixed Calcium Hydroxide Paste with Iodoform)
- Diapaste (Premixed Calcium Hydroxide Paste with Barium Sulfate)
- Root Canal Sealing Material
- MTA(Mineral Trioxide Aggregate)
- Evofill Duo(Cordless Warm Vertical Compaction & Backfill Obturation Device with built-in GP Cartridge)
- Duo-Pen(Cordless Warm Vertical Compaction Device)
- Duo-Gun(Cordless Backfill Obturation Device)

- Restorative Nano Hybrid Composite Resin
- Flowable Restorative Composite Resin
- Light Cure Bonding Agent
- Etching Gel
- Temporary Dental Cement
- Cordless LED Curing Light

- Nickel Titanium Rotary Files
- EDTA Root Canal Preparation Cream
- EDTA 17% Solution
- Endodontic Micro-Motor
- Flexible K-File
- Lentulo
- Probe File
- Gate Drills
- Peeso Reamers
- Nickel Titanium Hand Files
- Stainless Steel Hand Files
- Stainless Steel Spreader
- Stainless Steel Plugger
- Endo Condenser
- Endo Gauges
- Irrigation Syringes
- Endodontic Irrigation Tips

- Aluminum Endo Storage Boxes
- Prophy Brushes
- Prophy Cups



ROOT CANAL OBTURATION

- Millimeter Marked Gutta Percha Points
- Special Taper Gutta Percha Points
- Millimeter Marked Paper Points
- Special Taper Paper Points
- Temporary Filling Materials
- Diapex Plus (Premixed Calcium Hydroxide Paste with Iodoform)
- Diapaste (Premixed Calcium Hydroxide Paste with Barium Sulfate)
- Root Canal Sealing Material
- MTA (Mineral Trioxide Aggregate)
- Evofill Duo (Cordless Warm Vertical Compaction & Backfill Obturation Device with built-in GP Cartridge)
- Duo-Pen (Cordless Warm Vertical Compaction Device)
- Duo-Gun (Cordless Backfill Obturation Device)

DiaDent's Millimeter Marked Gutta Percha Points & Paper Points

- All DiaDent Points are Hand Jig Rolled to exacting standards.
- They are uniformly tapered and unsurpassed for consistency in sizing.
- All Points are laser inspected to ensure the tightest tolerances surpassing ISO standards.

Millimeter Marked Gutta Percha Points

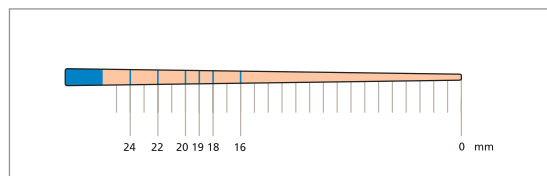
- Quick and easy method for depth measurements.
- Points with mm marking at 16mm, 18mm, 19mm, 20mm, 22mm and 24mm.
- Eliminates apex perforations which may lead to bleeding.
- Reaches the apex, completely seal the entire length of the canal.
- Save chair time with premeasured points.
- Most accurate depth measurements.

Computerized Laser Inspection System

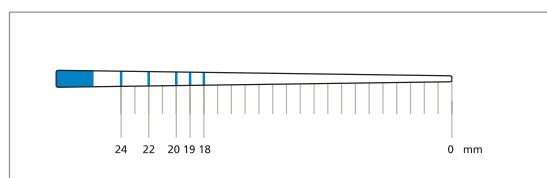
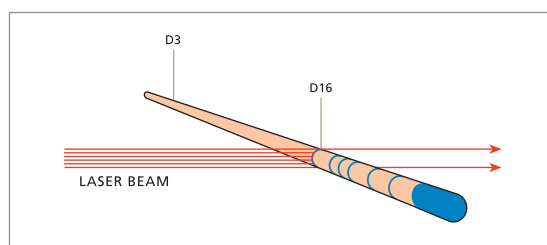
- Each point is inspected by the laser beam.
- Using a laser beam, each DiaDent ML.029 point is individually inspected for diameters at D3 and D16.
- ISO and ADA standard requires the use of 1/100mm incremental measurement units, DiaDent uses 1/1,000mm increments.

Millimeter Marked Paper Points

- Quick and easy method for depth measurements.
- Points with mm marking at 18mm, 19mm, 20mm, 22mm and 24mm.
- Eliminates apex perforations which may lead to bleeding.
- Completely drying the entire length of the canal.
- Save chair time with premeasured points.
- Most accurate depth measurements.

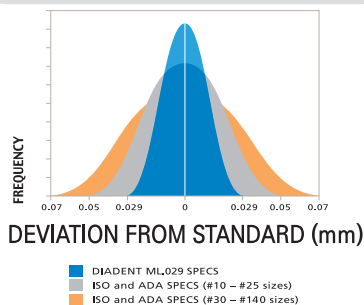


Millimeter Marked

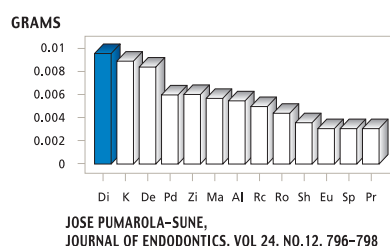


Millimeter Marked

DiaDent Quality Assurance



Comparative absorption of Paper Points, by Brand



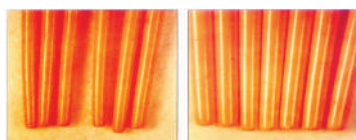
DIADENT PATENTS

- US Patent No. 6,004,133
- International Patents pending.
- European Patents No. 0964656
- United Kingdom Patents No. 0964656
- Deutsches Patents No. EP 0964656

Hand Jig Rolled Points vs Machine Rolled Points

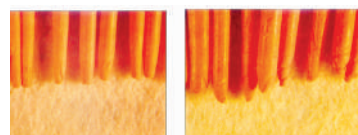
- DiaDent's method of hand rolling the points ensures the following:

DiaDent Hand Jig Rolled Gutta Percha Points



- Consistent, Uniform taper
- Smooth, Rounded Bullet shaped tips
- Readily conforms to shape of canal
- Greater likelihood of optimal apical seal

Machine Rolled Gutta Percha Points



- Inconsistent taper
- Uneven, Unpredictably shaped tips
- Overlapping of material of the tips
- Reduced likelihood of optimal apical seal

ML.029

MILLIMETER MARKED + LASER INSPECTED GUTTA PERCHA POINTS



ML.029

M - Millimeter Marked
L - Laser Inspected
.029 - Diameter Tolerance

Available Sizes

| Size | SP-60 |
|------|------------|
| XF | ML102-S601 |
| FF | ML102-S602 |
| MF | ML102-S603 |
| F | ML102-S604 |
| FM | ML102-S605 |
| M | ML102-S606 |
| ML | ML102-S607 |
| L | ML102-S608 |
| XL | ML102-S609 |
| XF/M | ML102-S691 |

(Pkg. of 100)

Size vs Color Chart

| | | | | |
|----|----|-----|----|----|
| 15 | 45 | 90 | XF | ML |
| 20 | 50 | 100 | FF | L |
| 25 | 55 | 110 | MF | XL |
| 30 | 60 | 120 | F | 08 |
| 35 | 70 | 130 | FM | 10 |
| 40 | 80 | 140 | M | |

| Size | SP-60 |
|---------|------------|
| #8 | ML101-S601 |
| #10 | ML101-S602 |
| #15 | ML101-S603 |
| #20 | ML101-S604 |
| #25 | ML101-S605 |
| #30 | ML101-S606 |
| #35 | ML101-S607 |
| #40 | ML101-S608 |
| #45 | ML101-S609 |
| #50 | ML101-S610 |
| #55 | ML101-S611 |
| #60 | ML101-S612 |
| #70 | ML101-S613 |
| #80 | ML101-S614 |
| #15/40 | ML101-S691 |
| #45/80 | ML101-S692 |
| #90/140 | ML101-S693 |

(Pkg. of 120)

Package Information

- **SP-60 Slide Package**
one hand slide open lid
Box dimension:
70×13×45mm(W×H×D)

COLOR CODED GUTTA PERCHA POINTS



Available Sizes

| Size | P-60 |
|------|---------|
| XF | 102-601 |
| FF | 102-602 |
| MF | 102-603 |
| F | 102-604 |
| FM | 102-605 |
| M | 102-606 |
| ML | 102-607 |
| L | 102-608 |
| XL | 102-609 |
| XF/M | 102-691 |

(Pkg. of 100)

| Size | P-60 |
|---------|---------|
| #8 | 101-601 |
| #10 | 101-602 |
| #15 | 101-603 |
| #20 | 101-604 |
| #25 | 101-605 |
| #30 | 101-606 |
| #35 | 101-607 |
| #40 | 101-608 |
| #45 | 101-609 |
| #50 | 101-610 |
| #55 | 101-611 |
| #60 | 101-612 |
| #70 | 101-613 |
| #80 | 101-614 |
| #15/40 | 101-691 |
| #45/80 | 101-692 |
| #90/140 | 101-693 |

(Pkg. of 120)

Package Information

- **P-60 Spill Proof Package**
6 compartments plastic package
Box dimension :
71×13×46mm(W×H×D)

Size vs Color Chart

| | | | | |
|----|----|-----|----|----|
| 15 | 45 | 90 | XF | ML |
| 20 | 50 | 100 | FF | L |
| 25 | 55 | 110 | MF | XL |
| 30 | 60 | 120 | F | 08 |
| 35 | 70 | 130 | FM | 10 |
| 40 | 80 | 140 | M | |

DIA-PROISO.04/.06 PLUS MILLIMETER MARKED + LASER INSPECTED SPECIAL TAPER GUTTA PERCHA POINTS

- Millimeter Marked Special Taper Gutta Percha Points.
- Designed to be used to complement for **Profile®**, **Hero®** & **K3®** files.
- Available in taper .04 & .06



- 6% Dia-ProISO .06 Plus
- 4% Dia-ProISO .04 Plus
- 2% ML.029 / MMPP



Available Sizes

| Size | Dia-ProISO .04 Plus | Dia-ProISO .06 Plus |
|--------|---------------------|---------------------|
| | SP-60 | SP-60 |
| #15 | ML158-S603 | ML159-S603 |
| #20 | ML158-S604 | ML159-S604 |
| #25 | ML158-S605 | ML159-S605 |
| #30 | ML158-S606 | ML159-S606 |
| #35 | ML158-S607 | ML159-S607 |
| #40 | ML158-S608 | ML159-S608 |
| #45 | ML158-S609 | ML159-S609 |
| #50 | ML158-S610 | ML159-S610 |
| #55 | ML158-S611 | ML159-S611 |
| #60 | ML158-S612 | ML159-S612 |
| #70 | ML158-S613 | ML159-S613 |
| #80 | ML158-S614 | ML159-S614 |
| #15/40 | ML158-S691 | ML159-S691 |
| #45/80 | ML158-S692 | ML159-S692 |

(Pkg. of 60)

DIA-PROT PLUS



- Designed to be used to complement **DIA-PT™ File**, **Dia-X File** and **Protaper® Files**.
- Millimeter Marked Points
- One hand slide open lid

| Size | ITEM No. |
|--------|-------------|
| #F1 | MLP150-S601 |
| #F2 | MLP150-S602 |
| #F3 | MLP150-S603 |
| #F4 | MLP150-S604 |
| #F5 | MLP150-S605 |
| #F1/F3 | MLP150-S691 |
| #F4/F5 | MLP150-S692 |
| #F1/F5 | MLP150-S693 |

(Pkg. of 60)

DIA-PROT NEXT



- Designed to be used to complement **Protaper® Next Files**.
- Millimeter Marked Points
- One hand slide open lid

| Size | ITEM No. |
|--------|------------|
| #X2 | ML167-S602 |
| #X3 | ML167-S603 |
| #X4 | ML167-S604 |
| #X5 | ML167-S605 |
| #X2/X5 | ML167-S691 |
| #X2/X3 | ML167-S692 |

(Pkg. of 60)

DIA-PRO R



- Designed to be used to complement **Reciproc® Files**.
- Millimeter Marked Points

| Size | ITEM No. |
|-----------------|------------|
| #25 | ML164-S605 |
| #40 | ML164-S608 |
| #50 | ML164-S610 |
| #Asst(25/40/50) | ML164-S691 |

(Pkg. of 60)

DIA-PRO W GOLD



- Designed to be used to complement **Wave One® Gold Files**.
- Millimeter Marked Points
- One hand slide open lid

| Size | ITEM No. |
|-----------------------------------|------------|
| #Small | ML168-S601 |
| #Primary | ML168-S602 |
| #Medium | ML168-S603 |
| #Large | ML168-S604 |
| #Asst(Small/Primary/Medium/Large) | ML168-S691 |

(Pkg. of 60)

DIA-PRO W



- Designed to be used to complement **Wave One® Files**.
- Millimeter Marked Points
- One hand slide open lid

| Size | ITEM No. |
|----------------------------|------------|
| #Small | ML165-S601 |
| #Primary | ML165-S602 |
| #Large | ML165-S603 |
| #Asst(Small/Primary/Large) | ML165-S691 |

(Pkg. of 60)

FEATHERED TIP



- Designed to be used as auxiliary points to the master cone technique
- Extra fine taper
- Hand Jig Rolled

| Size | ITEM No. |
|-------|----------|
| #XF | 126-S601 |
| #FF | 126-S602 |
| #MF | 126-S603 |
| #F | 126-S604 |
| #FM | 126-S605 |
| #M | 126-S606 |
| #ML | 126-S607 |
| #L | 126-S608 |
| #XF/M | 126-S691 |

(Pkg. of 100)

MMPP

MILLIMETER MARKED PAPER POINTS



Package Information

• P-33 Cell Package

Points remain sterile until opened
Box dimension: 78×19×50mm(W×H×D)

• SP-60 Slide Package

One hand slide open lid
Box dimension: 70×13×45mm(W×H×D)

- MMPP is marked to provide preliminary guidance in measuring the root canal depth before proceeding clinically with the application of the Gutta Percha Points.
- These points are highly absorbent and color coded to identify ISO tip sizes.

Available Sizes

| Size | SP-60 |
|--------|------------|
| XXF | MP202-S601 |
| XF | MP202-S602 |
| F | MP202-S603 |
| M | MP202-S604 |
| C | MP202-S605 |
| XC | MP202-S606 |
| XXF/XC | MP202-S691 |

(Pkg. of 200)

| Size | SP-60 |
|---------|------------|
| #8 | MP201-S601 |
| #10 | MP201-S602 |
| #15 | MP201-S603 |
| #20 | MP201-S604 |
| #25 | MP201-S605 |
| #30 | MP201-S606 |
| #35 | MP201-S607 |
| #40 | MP201-S608 |
| #45 | MP201-S609 |
| #50 | MP201-S610 |
| #55 | MP201-S611 |
| #60 | MP201-S612 |
| #70 | MP201-S613 |
| #80 | MP201-S614 |
| #15/40 | MP201-S691 |
| #45/80 | MP201-S692 |
| #90/140 | MP201-S693 |

Size vs Color Chart

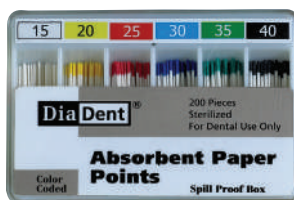
| 8 | 10 | | |
|----|----|-----|-----|
| 15 | 45 | 90 | XXF |
| 20 | 50 | 100 | XF |
| 25 | 55 | 110 | F |
| 30 | 60 | 120 | M |
| 35 | 70 | 130 | C |
| 40 | 80 | 140 | XC |

Contents

| Size | P-33 | SP-60 |
|---------|--------|--------|
| #08-80 | 200pcs | 200pcs |
| #90-140 | 200pcs | 120pcs |

COLOR CODED PAPER POINTS

- Made from specially formulated highly absorbent papers.
- Color Coded.
- Hand Jig rolled to ensure Superior absorbency.



Package Information

• P-60 Spill Proof Package

6 compartments plastic package
Box dimension:
71×13×50mm(W×H×D)

Available Sizes

| Size | P-60 |
|--------|---------|
| XXF | 202-601 |
| XF | 202-602 |
| F | 202-603 |
| M | 202-604 |
| C | 202-605 |
| XC | 202-606 |
| XXF/XC | 202-691 |

(Pkg. of 200)

| Size | P-60 |
|---------|---------|
| #8 | 201-601 |
| #10 | 201-602 |
| #15 | 201-603 |
| #20 | 201-604 |
| #25 | 201-605 |
| #30 | 201-606 |
| #35 | 201-607 |
| #40 | 201-608 |
| #45 | 201-609 |
| #50 | 201-610 |
| #55 | 201-611 |
| #60 | 201-612 |
| #70 | 201-613 |
| #80 | 201-614 |
| #15/40 | 201-691 |
| #45/80 | 201-692 |
| #90/140 | 201-693 |

Size vs Color Chart

| 8 | 10 | | |
|----|----|-----|-----|
| 15 | 45 | 90 | XXF |
| 20 | 50 | 100 | XF |
| 25 | 55 | 110 | F |
| 30 | 60 | 120 | M |
| 35 | 70 | 130 | C |
| 40 | 80 | 140 | XC |

Contents

| Size | P-60 |
|---------|--------|
| #08-80 | 200pcs |
| #90-140 | 120pcs |

DIA-PROISO .04/.06 PLUS

MILLIMETER MARKED SPECIAL TAPER PAPER POINTS

- Millimeter marked Special Taper Absorbency Paper Points.
- Designed to be used for drying and cleaning the canals prepared with **Profile®**, **Hero®** & **K3®** files.
- Available in .04 & .06 taper.



Available Sizes

| Size | Dia-Pro ISO .04 Plus | Dia-Pro ISO .06 Plus |
|--------|----------------------|----------------------|
| | SP-60 | SP-60 |
| #15 | MP258-S603 | MP259-S603 |
| #20 | MP258-S604 | MP259-S604 |
| #25 | MP258-S605 | MP259-S605 |
| #30 | MP258-S606 | MP259-S606 |
| #35 | MP258-S607 | MP259-S607 |
| #40 | MP258-S608 | MP259-S608 |
| #45 | MP258-S609 | MP259-S609 |
| #50 | MP258-S610 | MP259-S610 |
| #55 | MP258-S611 | MP259-S611 |
| #60 | MP258-S612 | MP259-S612 |
| #70 | MP258-S613 | MP259-S613 |
| #80 | MP258-S614 | MP259-S614 |
| #15/40 | MP258-S691 | MP259-S691 |
| #45/80 | MP258-S692 | MP259-S692 |

(Pkg. of 100)

DIA-PROISO .04/.06 PLUS
IN THE CELL PACKAGE

- Points remain sterile until opened

| Cell pkg | Dia-Pro ISO .04 Plus | Dia-Pro ISO .06 Plus |
|----------|----------------------|----------------------|
| #15 | MP 258-703 | MP 259-703 |
| #20 | MP 258-704 | MP 259-704 |
| #25 | MP 258-705 | MP 259-705 |
| #30 | MP 258-706 | MP 259-706 |
| #35 | MP 258-707 | MP 259-707 |
| #40 | MP 258-708 | MP 259-708 |
| #15/40 | MP 258-791 | MP 259-791 |

(Pkg. of 120)

DIA-PROT

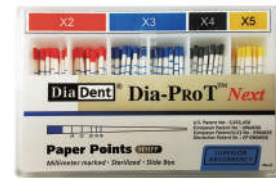


- Designed to be used to complement **DIA-PT™** File, **Dia-X File** and **Protaper®** Files.
- Millimeter Marked Points
- One hand slide open lid

| Size | ITEM No. |
|--------|-------------|
| #F1 | MP250-S601 |
| #F2 | MP250-S602 |
| #F3 | MP250-S603 |
| #F4 | MP250-S604 |
| #F5 | MP250-S605 |
| #F1/F3 | MP 250-S691 |
| #F4/F5 | MP 250-S692 |
| #F1/F5 | MP 250-S693 |

(Pkg. of 100)

DIA-PROT NEXT

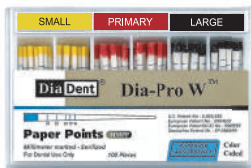


- Designed to be used to complement **Protaper®** Next Files.
- Millimeter Marked Points
- One hand slide open lid

| Size | ITEM No. |
|--------|------------|
| #X2 | MP267-S602 |
| #X3 | MP267-S603 |
| #X4 | MP267-S604 |
| #X5 | MP267-S605 |
| #X2/X5 | MP267-S691 |
| #X2/X3 | MP267-S692 |

(Pkg. of 100)

DIA-PRO W

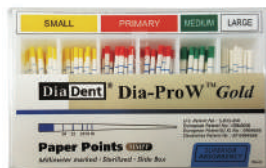


- Designed to be used to complement **Wave One®** Files.
- Millimeter Marked Points
- One hand slide open lid

| Size | ITEM No. |
|----------------------------|-----------|
| #Small | MP265-601 |
| #Primary | MP265-602 |
| #Large | MP265-603 |
| #Asst(Small/Primary/Large) | MP265-691 |

(Pkg. of 100)

DIA-PRO W GOLD



- Designed to be used to complement **Wave One®** Gold Files.
- Millimeter Marked Points
- One hand slide open lid

| Size | ITEM No. |
|-----------------------------------|------------|
| #Small | MP268-S601 |
| #Primary | MP268-S602 |
| #Medium | MP268-S603 |
| #Large | MP268-S604 |
| #Asst(Small/Primary/Medium/Large) | MP268-S691 |

(Pkg. of 100)

DIA-PRO R



- Designed to be used to complement **RECIPROC®** Files.
- Millimeter Marked Points

| Size | ITEM No. |
|-----------------|-----------|
| #25 | MP264-605 |
| #40 | MP264-608 |
| #50 | MP264-610 |
| #Asst(25/40/50) | MP264-691 |

(Pkg. of 100)

E-TEMP**HYDRAULIC TEMPORARY RESTORATIVE MATERIAL**

- Temporary filling material for standard cavities and post-endodontic treatments.

Benefits

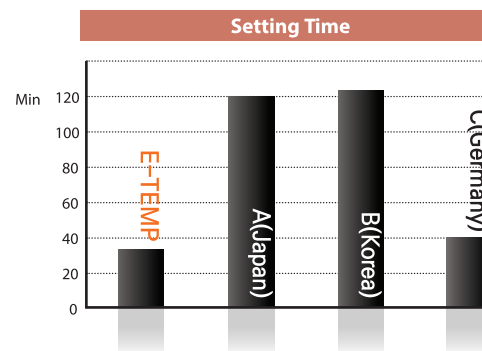
- Temporary Filling Material for Standard Cavities.
- Easily setting initiated by saliva.
- Excellent adaptability.
- Easy to remove.
- Adheres to dentine, expands slightly during the setting and hardens rapidly to ensure hermetical seal.
- Improved the mechanical properties for the quick temporary filling.

**Directions**

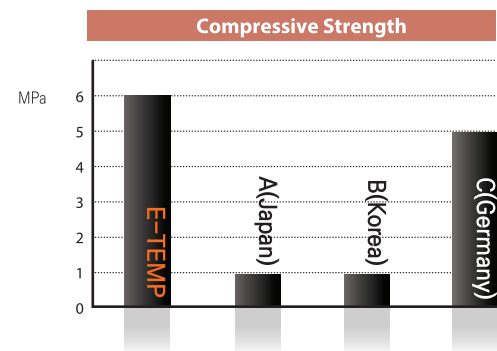
- Prepare and dry the cavity with a small cotton pellet.
- Transfer E-TEMP to the cavity using a suitable instrument and form the contour. In the case of occlusal Class I, the patient bites down on the surface, and then form the contour.
- After the patient close the mouth, E-TEMP will harden within 35 minutes. Recommend the patient to avoid the strong pressure or abrasion for at least 2 hours.

Package

- ITEM #2004-1001 30g



- This test is measured as the same condition at 37 degrees and 95% humidity in the laboratory(R&D DiaDent 2013)



- This test is measured as ISO 3107 regulations after the same setting time in the laboratory(R&D DiaDent 2013)

PACKAGE INFORMATION**• P-33 Cell Package**

Points remain sterile until opened
Box dimension: 78×19×50mm(W×H×D)

**• P-43 Vial Package**

Contains 6 light weight plastic square vials with color coded caps
Box dimension: 77×17×50mm(W×H×D)

**• P-63 Spill Proof Package**

6 compartments with outer paper box
Box dimension: 73×17×49mm(W×H×D)

**• SP-60 Slide Package**

One hand slide open lid
Cellophane shrink-wrapped package
Box dimension: 70×13×45 mm (W×H×D)



DIATEMP™**A VISIBLE, LIGHT CURED TEMPORARY FILLING MATERIAL**

Light Cured material for temporary/intermediate restorations of inlay and onlay, for relining prefabricated crowns and bridges.

**Benefits**

- Quick and simple removal: Can be removed in one piece
- High wear resistance, mechanical strength
- Ensures a fast set
- Excellent adhesion
- Easy application: Convenient syringe dispensed material does not require mixing
- Blue DiaTemp is ideal for Posterior teeth
- Yellow DiaTemp is ideal for Anterior teeth

Packages

- 3 syringes of 3g
- ITEM #A2003-1101 Blue
- ITEM #A2003-1201 Yellow

DIATEMP™ FLOW**LIGHT CURED FLOWABLE TEMPORARY FILLING MATERIAL****NEW**

Flowable Light Cured Material for temporary/intermediate restorations of inlay & onlay or relining crowns & bridges, with easy handling.

**Benefits**

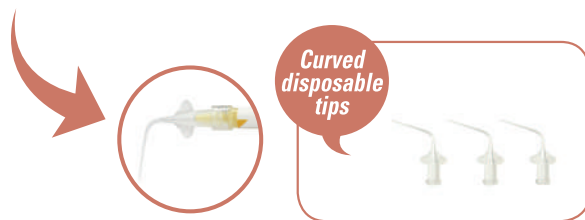
- Temporary restoration of prepared cavity
- Excellent Flowable: Easy Application to various shapes of teeth and useful for inlay and onlay cases
- Easy to Remove: Can be removed in one piece
- Good Adhesion for tight sealing of margins
- Durability: High Resistance for External Force

Packages

- 5 syringes of 1.8g and 10 disposable tips
- ITEM #A2003-2101 Blue
- ITEM #A2003-2201 Yellow

DIAPEX® PLUS**CALCIUM HYDROXIDE PASTE WITH IODOFORM**

- Premixed Calcium Hydroxide + Iodoform paste for root canal treatment.
- Temporary root canal filling material after a pulpectomy.
- Ideal for the treatment of infected root canal and for vital pulpotomies in deciduous teeth.

**Indications**

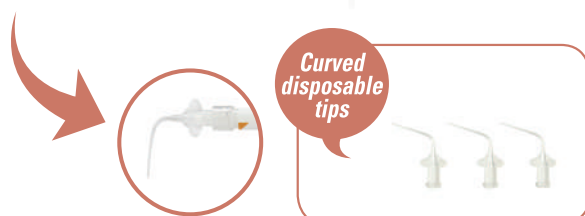
- Intracanal medicament
- Apexification
- Exudation Control
- Periapical Lesions
- Root Resorption
- Temporary root filling
- Perforations
- Under developed Pulpless Teeth

Benefits

- Quiets "Hot Abscess"
- Disinfects canal
- Promotes Apexification
- Treats Traumatic Injuries
- Radiopaque
- Quick and simple application
- Antibacterial and Bacterostatic

Packages

- **ITEM #A1001-501 Regular Kit Type A**
- 2g of paste and 20 disposable tips with cap
- **ITEM #A1001-502 Regular Kit Type B**
- 2g of paste and 10 disposable tips with cap
- **ITEM #A1001-503 Regular Kit Type C**
- 2g of paste and 4 disposable tips with cap
- **ITEM #A1001-504 Refill Kit**
- 2g of paste
- **ITEM #A1001-505 Intro Kit**
- 0.5g of paste and 4 disposable tips
- **ITEM #1001-320 Clear Disposable Tips(Curved)**
- 20 disposable tips

DIAPASTE™**CALCIUM HYDROXIDE PASTE WITH BARIUM SULFATE****Characteristics**

- Premixed Calcium Hydroxide + Barium Sulfate paste for root canal treatment.
- Temporary root filling.
- Root canal filling for primary teeth.
- Use after pulp extirpation treatment.
- Filling on the pulpotomy.
- Temporary Pulp Capping.

Benefits

- Water Soluble: Easy to clean and remove, reduce operative time
- Easy and quick access
- Radiopaque
- Antibacterial

Packages

- **ITEM #A1001-401 Regular Kit Type A**
- 2g of paste and 20 disposable tips with cap
- **ITEM #A1001-402 Regular Kit Type B**
- 2g of paste and 10 disposable tips with cap
- **ITEM #A1001-403 Regular Kit Type C**
- 2g of paste and 4 disposable tips with cap
- **ITEM #A1001-404 Refill Kit**
- 2g of paste
- **ITEM #A1001-405 Intro Kit**
- 0.5g of paste and 4 disposable tips
- **ITEM #1001-320 Clear Disposable Tips(Curved)**
- 20 disposable tips

DIA-PROSEAL™**ROOT CANAL SEALING MATERIAL**

- DIA-PROSEAL™, root canal sealer is an epoxy resin-based formula with outstanding flow characteristics.

**Directions**

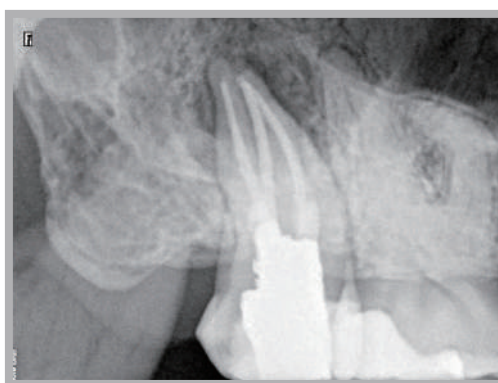
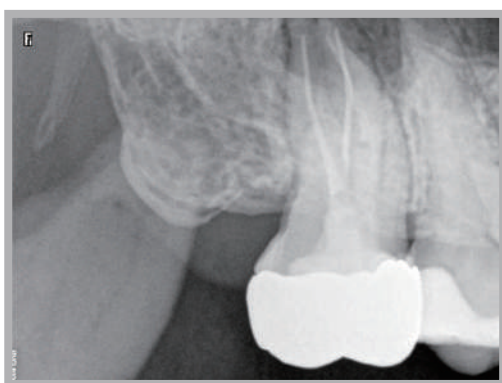
- Prior to application of DIA-PROSEAL™, prepare and shape the root canal using endodontic technique.
- Remove all of debris in the root canal. And disinfect and clean the root canal with Sodium Hypochlorite or EDTA solution and dry it.
- Using DIA-PROSEAL™ in dual syringes, press the syringe and squeeze equal volume units of Base material(yellow) and Catalyst material(white) in the ratio of 1:1 on a mixing pad.
- Mix the Base material(yellow) and Catalyst material(white) with a spatula for 10~20 sec to be mixed into a ivory color completely.
- Apply only a light coating of DIA-PROSEAL™ to Gutta Percha Points(silver or titanium root canal points also) and put points into the apex slowly.
- Please check the seal by X-Ray.

Benefits

- The ideal root sealer with Low Shrinkage reduced gapping between the sealer and canal wall.
- Low solubility makes it resistant to breaking down over time.
- 1:1 paste to paste manual mixing system.
- Fast and Easy Preparation and Less Waste.
- Mixing and handling is very smooth.
- Excellent flow properties allow it to reach and seal lateral canals, making it especially suited to warm gutta-percha methods.
- Low risk of cytotoxicity with short setting time.
- Better biocompatibility for a solution to the sensitivity and periapical inflammation.
- High radiopacity
- Lightly coated Gutta Percha Points with a good film thickness.

Package

- **ITEM #1003-201**
 - 1 Syringe of 16g (Base 6.5g + Catalyst 9.5g)
 - 1 Mixing pad
 - 1 Spatula
- **ITEM #1003-202**
 - 1 Syringe of 4g
 - 1 Mixing pad
 - 1 Spatula
- **ITEM #2001-6113- Spatula for DIA-PROSEAL™**
- **ITEM #2001-6114- Mixing pad for DIA-PROSEAL™**

RADIOGRAPHS

High radiopacity with DIA-PROSEAL™

DIA-ROOT™ BIO MTA**MINERAL TRIOXIDE AGGREGATE****NEW**

Root Repair Materials with excellent biocompatibility and offers distinct advantages for root canal repair procedures.

Indications

- Repair of Root Resorption and Perforations
- Direct Pulp capping
- For Pediatric Pulpotomies
- Root-End Filling
- Apexification

Benefits

- Great Biocompatibility
- Outstanding Sealing Capabilities
- Least Discoloration
- Antibacterial Effect
- Easy Handling Properties

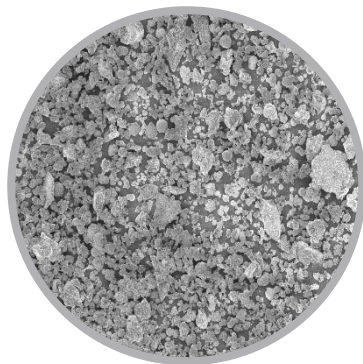
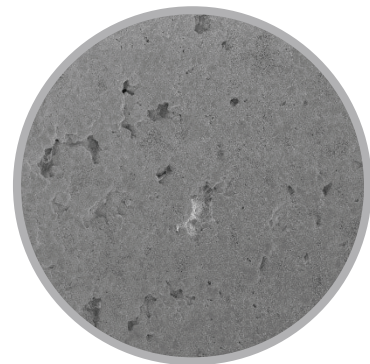
Directions

- Open the cap of MTA powder
- Pour the powder into the mixing pad
- Put the distilled water onto the powder: Mixing Ratio 0.5g/0.4cc(Powder/Liquid)
- Wet the powder and mix it gently for few seconds
- Carry the mixture on the part for the treatment

Packages**• ITEM #1003-601**

- MTA Powder 0.5g
- 1 Mixing Pad
- 1 Spatula

(DIA-ROOT™ BIO MTA will be released in the year of 2019)

**BEFORE****AFTER**

EVOFILL™ DUO**CORDLESS WARM VERTICAL COMPACTION & BACKFILL
OBTURATION DEVICE WITH BUILT-IN GP CARTRIDGE**

EvoFill Duo is the new advanced cordless obturation system that consists of EvoFill backfill obturation device and EvoPack warm vertical compaction device. With the innovative electric motor, EvoFill features precisely controlled motorized gutta percha extrusion, fast heating bendable thin tip, and digital control panel. Save valuable time with hygienic single-use gutta percha cartridge that provides reliable result every time. EvoPack effectively and tightly compacts and seals all canals including lateral canals. It features LED light-guided condenser, instant heating, and digital temperature control. Both units can be fully charged within 90 minutes.

Features

EvoPack: Vertical Compaction Device

- Innovative LED light-guided condenser
- Quick heating tip reaches high level of temperature(250°C) within one (1) second
- Excellent result with warm and vertical compaction for all canals including lateral canals. EvoPack offers reliable results with tightly sealed root canals
- Automatically recognize tip size of heating condenser
- Adjustable Temperature Setting (170°C, 200°C, 250°C) and time (3 seconds, 5 seconds) for safety
- Displays error status in case of power or tip disconnection
- Simple one-button operation

EvoFill: Backfill Obturation System

- Controlled, precise motorized Gutta Percha extrusion
- Fast heating 360° swivel cartridge needle
- Hygienic disposable cartridges to prevent secondary infections
- 3 different Temperature Settings (160°C, 180°C, 200°C) to control extrusion speed
- Easier, motorized extrusion and less hand fatigue
- No mess, easy clean up

Package

- **ITEM #4005-1001 Regular Kit**
 - EvoFill Handpiece, EvoPack Handpiece & Dual Charger
 - Accessories: Safety Cap(1ea), Heating Condenser #F/FM(1ea each), Power Adapter & Cord, Scrubbing Brush(1ea)
 - *Gutta Percha Cartridge is not included in the Regular Kit.

Accessories

- ITEM #4005-1101 EvoFill Handpiece
- ITEM #4005-1201 EvoPack Handpiece
- ITEM #4005-2010 Gutta Percha Cartridge(20ea)
- ITEM #4005-2020 Dual Charger
- ITEM #4005-2030 Safety Cap
- ITEM #4005-2050 Battery
- ITEM #4005-2060 Power Adapter & Cord
- ITEM #4005-2070 Heating Condenser #XF
- ITEM #4005-2071 Heating Condenser #F
- ITEM #4005-2072 Heating Condenser #FM
- ITEM #4005-2073 Heating Condenser #M
- ITEM #4005-2074 Heating Condenser #ML
- ITEM #4005-2075 Heating Condensers #F/FM(1ea each)
- ITEM #4005-2080 Multi Tool
- ITEM #4005-2090 Scrubbing Brush



DIA-DUO**CORDLESS WARM VERTICAL COMPACTION &
BACKFILL OBTURATION DEVICE**

Dia-Duo is new developed Cordless Obturation System included Duo-Pen warm vertical compaction device and Duo-Gun backfill obturation device. Duo-Pen offers excellent warm vertical compaction with quick heating tip. Duo-Gun with quick heating system allows the fast and perfect obturation delivery. Duo-Gun and Duo-Pen are located in one charger.

Packages

- **ITEM #4007-2000 Regular Kit**

- Duo-Gun Handpiece, Duo-Pen Handpiece & Duo-Charger
- Accessories: Heating Condenser #.04-50, Heating Condenser #.06-50, Duo-Pen Battery, Disposable Sheaths (200ea/Box) GP Obturation Tip(23G, 4ea), Gutta Percha Obturator (100ea), Duo-Gun Battery, Safety Cap(2ea), Plunger set, Plunger O-Ring Assembly(2ea), Multi Tool, Scrubbing Brush, Power Adapter, AC Power Cord

Accessories

- **ITEM #4007-2010 Duo-Gun Handpiece**
- **ITEM #4007-2020 Duo-Pen Handpiece**
- **ITEM #4007-2030 Duo Charger**
- **ITEM #4007-2080 Duo-Gun Battery**
- **ITEM #4007-2090 Duo-Pen Battery**

* Go to Page 20 & 21 to find all of Accessories.



DUO-PEN**CORDLESS WARM VERTICAL COMPACTION DEVICE**

Duo-Pen is Cordless Warm Vertical Compaction Device and also Duo-Pen has the optimum functionality and quality and is full proven effective for the downpack obturation system.

Techniques

- **Softening** the root canal filling material (Gutta Percha Points) during root canal treatment
- **Spreading** the root canal filling material (Gutta Percha Points) laterally and vertically
- **Cutting** the root canal filling material (Gutta Percha Points)
- **Compacting** the root canal filling material (Gutta Percha Points) using heat

Features

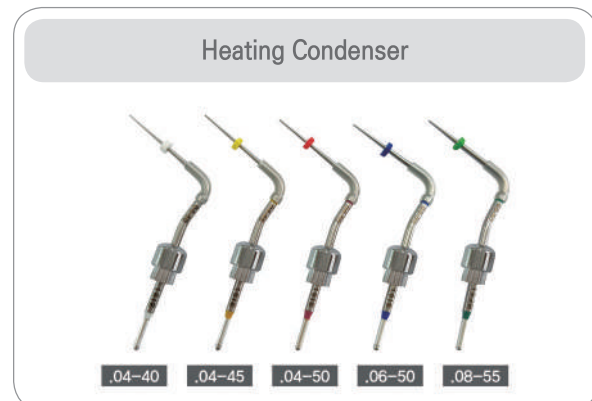
- Excellent result with warm and vertical compaction for all canals including lateral canals. Duo-Pen offers reliable results with tightly sealed root canals
- Cordless, ergonomic and lightweight design
- Quick heating tip reaches high level of temperature within one (1) second to save treatment time
- Display in the handpiece shows the remaining battery power, error and setting temperature
- The effective temperature control prevents the pen tip from burning out
- Duo-Pen handpiece automatically recognizes the size of tip
- Color-coded heating condensers are available in various sizes (#.04-40, .04-45, .04-50, .06-50, .08-55) for easy identification
- Three temperature settings (170°C, 200°C, 230°C)

**Packages**

- **ITEM #4007-2002 Regular Kit**
 - Duo-Pen Handpiece & Charger
 - Accessories: Heating Condenser #.04-50, Heating Condenser #.06-50, Disposable Sheaths (200ea/Box), Power Adapter, AC Power Cord

Accessories

- ITEM #4007-2020 Handpiece
- ITEM #4007-2032 Charger
- ITEM #4007-2070 Heating Condenser(.04-40) 1ea
- ITEM #4007-2071 Heating Condenser(.04-45) 1ea
- ITEM #4007-2072 Heating Condenser(.04-50) 1ea
- ITEM #4007-2073 Heating Condenser(.06-50) 1ea
- ITEM #4007-2074 Heating Condenser(.08-55) 1ea
- ITEM #4007-2075 Heating Condenser(.04-50/.06-50), 1ea each
- ITEM #4007-2090 Battery
- ITEM #4007-2270 Disposable Sheath(200ea/box)
- ITEM #4007-2280 Power Adapter
- ITEM #4007-2287 AC Power Cord



DUO-GUN**CORDLESS BACKFILL OBTURATION DEVICE**

Duo-Gun is Cordless Obturation System Device, Duo-Gun offers fast and easy obturation delivery. With this effective obturation system and technique, optimum results are achieved.

Features

- Cordless and Compact design allows complete freedom of movement
- Reliable Gutta Percha filling to the desired level without delay
- Variable Temperature settings (140°C, 170°C, 200°C): precise control of obturation flow
- Quick heating system: Temperature reaches 200°C within 15 seconds
- Fast and continuous flow of filling tightly seals the canal
- Left-handed person can push on/off button easily, both sides of handpiece have the power button
- Both displays of Handpiece show the remaining battery power, error and setting temperature
- The ergonomic design enables the obturation with a minimum input of force
- Durable heater is installed to minimize minor troubles
- Maintain the stable temperature during the operation with the accurate temperature control system

Packages

- **ITEM #4007-2001 Regular Kit**
 - Duo-Gun Handpiece & Charger
 - Accessories: GP Obturation Tips (23G, 4ea), Plunger Set, Multi Tool (1ea) Safety Caps (2ea), Gutta Percha Obturator (100ea), Plunger O-ring Assembly (2ea), Scrubbing Brush, Battery, Power Adapter, AC Power Cord

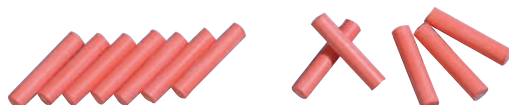
Accessories

- ITEM #4007-2010 Handpiece
- ITEM #4007-2031 Charger
- ITEM #4007-2080 Battery
- ITEM #4007-2120 GP Obturation Tip(23G, 4ea)
- ITEM #4007-2121 GP Obturation Tip(25G, 4ea)
- ITEM #4007-2130 Safety Cap (2ea)
- ITEM #4007-2140 Plunger Set
- ITEM #4007-2150 Plunger O-Ring Assembly (2ea)
- ITEM #4007-2160 Multi Tool (1ea)
- ITEM #4007-2161 Scrubbing Brush (1ea)
- ITEM #4007-2280 Power Adapter
- ITEM #4007-2287 AC Power Cord
- ITEM #181-101 Gutta Percha Obturator(Medium type, 100ea)

**GUTTA PERCHA OBTURATOR**

- **ITEM #181-101 Medium type**

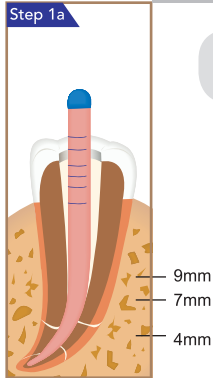
- Designed to use with Duo-Gun.
- Specially formulated Gutta Percha with excellent flowing characteristics.
- Easy to heat
- Pkg. of 100



ROOT CANAL OBTURATION TECHNICAL SEQUENCE

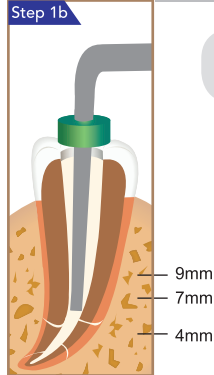
DOWNPACK OBTURATING WITH DUO-PEN

Step 1a



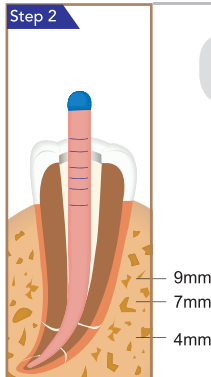
Shape the root canal with Endo Files and check the working length. Select the master Gutta Percha cone to be filled in the canal.

Step 1b



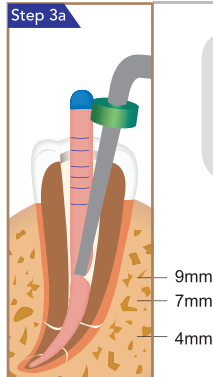
Insert pen tip into the root canal to the point 4~7mm short of the working length and fit Endo Stop in the pen tip.

Step 2



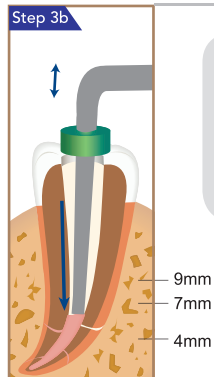
Fill the master Gutta Percha cone that is dipped in a sealer.

Step 3a



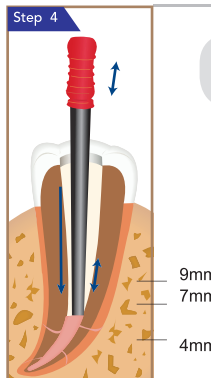
Place pen tip in the orifice of the canal and activate the device by pressing the Operation Button, using the activated pen tip, cut the middle of Gutta Percha cone and downpack it to the point 6~9mm from the APEX about 1.5~2 seconds only.

Step 3b



Release the Operation Button to allow pen tip to begin cooling, while at the same time continue pushing and holding the cooled pen tip to the APEX for 8 seconds to fill the canal completely. Activate the pen tip again by pressing and holding the Operation Button for about 1~1.5 seconds, compact the Gutta Percha cone to the point 4~7mm of working length.

Step 4



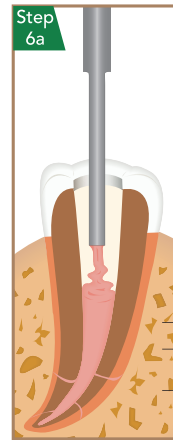
Condense the remaining material using with hand plugger.

ROOT CANAL OBTURATION TECHNICAL SEQUENCE

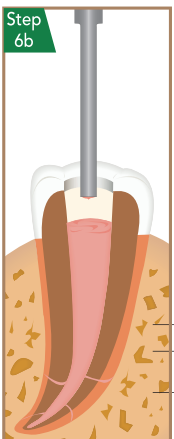
BACKFILL OBTURATING WITH DUO-GUN



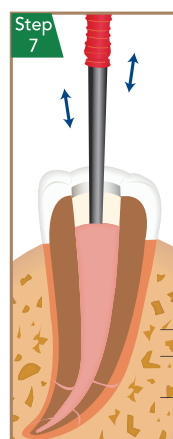
Using Duo-Gun's tip, make contact with the upper part of filled master cone in the canal, transfer heat for 3 to 5 seconds.



Flow the melted Gutta Percha Obturator to the root canal.

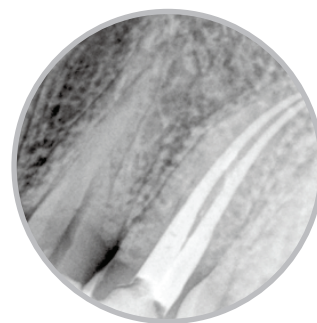
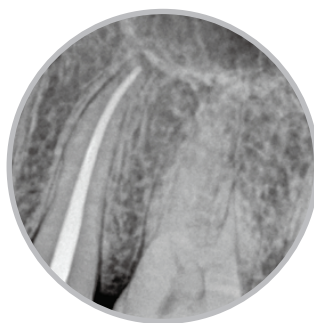


Continue flowing while withdrawing the needle from the canal.



Use a hand plugger to compact obturation material.

Radiographs



Perfect and tightly sealed root canals after the root canal warm obturation technique with Duo-Gun & Duo-Pen.



COSMETIC & RESTORATIVES

- Restorative Nano Hybrid Composite Resin
- Flowable Restorative Composite Resin
- Light Cure Bonding Agent
- Etching Gel
- Temporary Dental Cement
- Cordless LED Curing Light

DIAFIL™

A LIGHT CURE, ESTHETIC RESTORATIVE NANO HYBRID COMPOSITE RESIN

- Nano hybrid composite resin for use in Anterior and Posterior restorations



Start Kit



Refill Package



Capsule Type

Benefits

- Unique fillers offer minimum polymerization shrinkage which helps reduce stress and sensitivity on the tooth potentially
- Has excellent fracture toughness, high tensile, compressive strengths for long lasting results
- Very easy handling of acceptable viscosity and good marginal adaptation
- Remarkable color stability and superior quality of esthetics
- High Level of radiopacity

Packages

• Start Kit

- 5 composite resin syringes (4g)
- 1 Bottle bonding agent(5ml)
- 1 Etching gel syringe(3ml)
- Accessories: 50 brush tips, 1 brush handle, mixing well, mixing pad, 10 disposable tips, shade sheet

| Set | Composite Resin Shades | ITEM No. |
|-----------------|------------------------|------------|
| START KIT A SET | A1, A2, A3, A3.5, B2 | A2001-1101 |
| START KIT B SET | A2, A3, A3.5, B2, B3 | A2001-1102 |
| START KIT C SET | A1, A2, A3, A3.5, C2 | A2001-1103 |

• Refill Package

- 1 syringe × 4g

| | | | |
|------|------------|-----|------------|
| A1 | A2001-1201 | B2 | A2001-1207 |
| A2 | A2001-1202 | B3 | A2001-1208 |
| A3 | A2001-1203 | C2 | A2001-1210 |
| A3.5 | A2001-1204 | C3 | A2001-1211 |
| A4 | A2001-1205 | A20 | A2001-1212 |
| B1 | A2001-1206 | A30 | A2001-1213 |

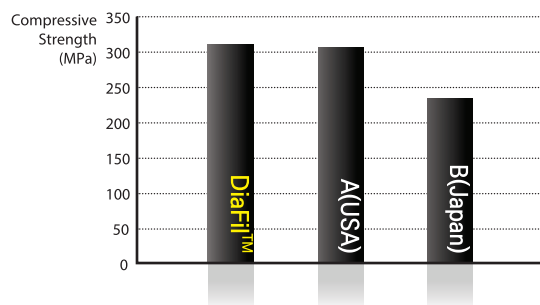
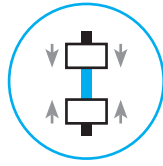
• Capsule Type

- 0.25g × 20 capsules

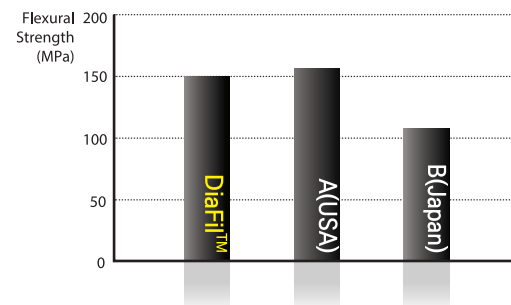
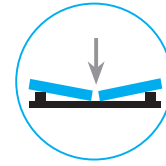
| | |
|------|------------|
| A1 | A2001-1405 |
| A2 | A2001-1401 |
| A3 | A2001-1402 |
| A3.5 | A2001-1403 |
| B2 | A2001-1404 |

PHYSICAL PROPERTIES

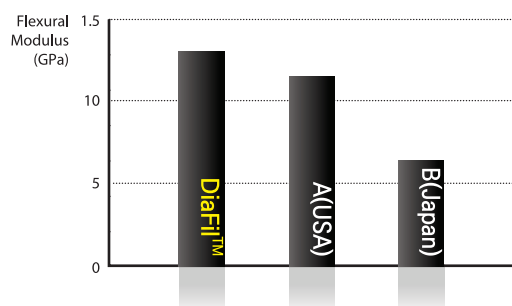
Compressive Strength



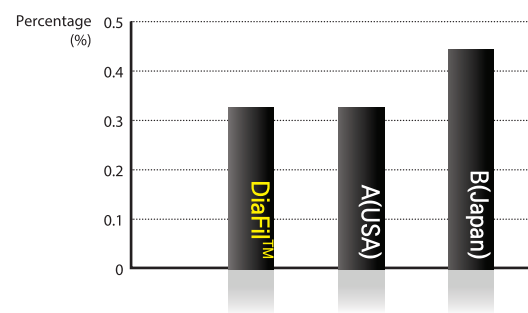
Flexural Strength



Flexural Modulus



Shrinkage



These tests are measured in the laboratory (DiaDent R&D Team 2018)

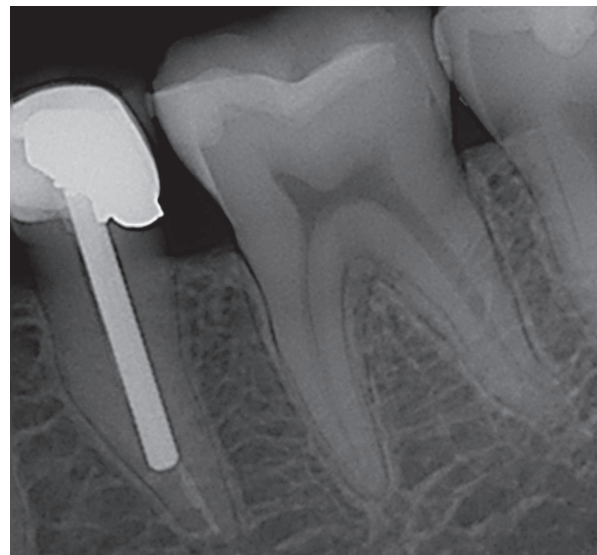
● POSTERIOR RESTORATION



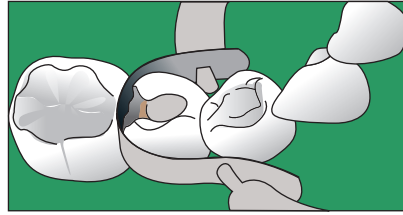
● ANTERIOR RESTORATION



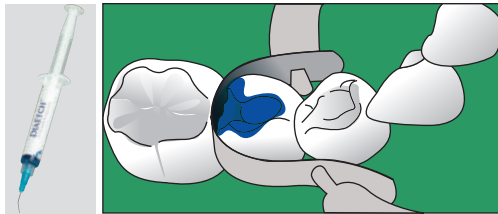
● HIGH RADIOPACITY



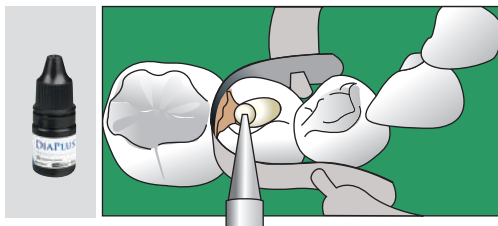
TECHNIQUE GUIDES



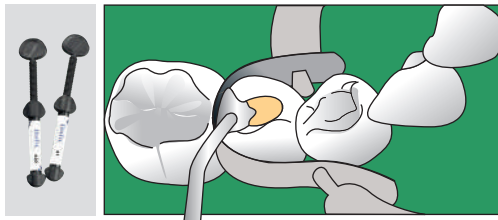
1. Prepare the tooth : Isolate the tooth with rubber dam and clean the tooth



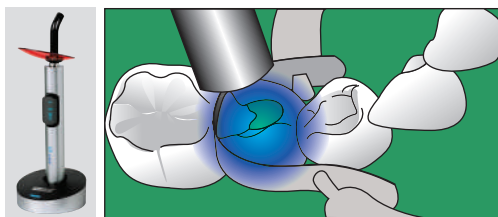
2. Etch : Apply DiaEtch(etchant) to enamel and dentin and wait 15 seconds. Rinse and blot the excess water, leaving tooth moist



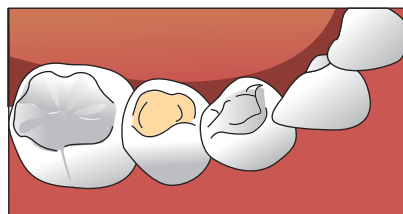
3. Bond : Apply 3 consecutive coats of DiaPlus (bonding agent) to enamel and dentin and wait 15 seconds. Dry gently for 3 seconds and light cure for 20 seconds



4. Place composite resin : Place DIAFIL™(composite resin) in layers less than 2.0mm



5. Light Cure : Cure each increment for 20 seconds



6. Finish and Polish

DIAFIL™ FLOW**LIGHT CURED FLOWABLE RESTORATIVE COMPOSITE RESIN**

Flowable composite with very easy handling and high strength

**Benefits**

- Has a high level of fluoride release with no slump, run which helps a fast techniques and handling
- Enables to be used in various restorative procedures
 - : Class III, V and IV direct restorations
 - A liner for Class I, II
 - Pit & Fissure sealant where is required
 - Well suited for minimally invasive dentistry
- Excellent tensile strength and low shrinkage
- High radiopaque materials

Packages**• Economic Package**

- Flowable Resin 2g×4 syringes
(Available shade A1, A2, A3, A3.5, B2, B3, C2, A20, A30)
- 40 disposable tips(black)
- Shade Sheet

• Refill Package

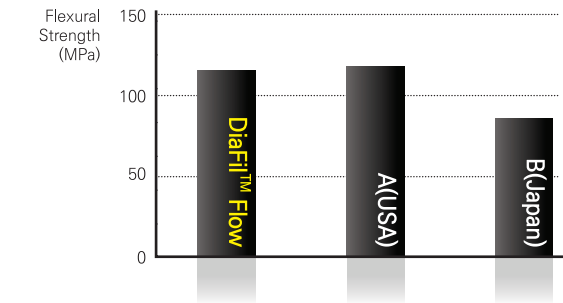
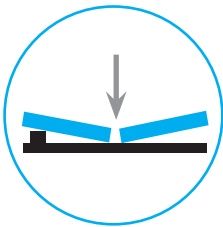
- Flowable Resin 2g×1 syringe
(Available shade A1, A2, A3, A3.5, B2, B3, C2, A20, A30)
- 10 disposable tips(black)

| SHADE | Economic Pkg. | Refill Pkg. |
|-------|---------------|-------------|
| A1 | A2001-4101 | A2001-4201 |
| A2 | A2001-4102 | A2001-4202 |
| A3 | A2001-4103 | A2001-4203 |
| A3.5 | A2001-4104 | A2001-4204 |
| B2 | A2001-4105 | A2001-4205 |
| B3 | A2001-4106 | A2001-4206 |
| C2 | A2001-4107 | A2001-4207 |
| A20 | A2001-4108 | A2001-4208 |
| A30 | A2001-4109 | A2001-4209 |

PHYSICAL PROPERTIES

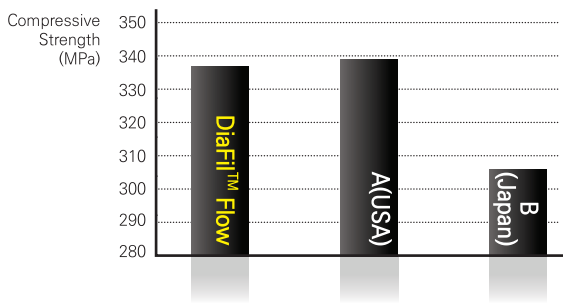
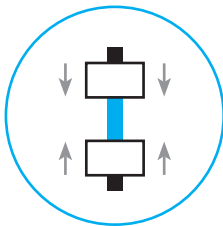
Flexural Strength

The flexural strength is measured by pressing a stick-typed experimental material. Flexural strength is the value obtained when the sample breaks, fixing both ends of sample and pressing in the middle of it. This test combines the forces found in compression and tension.



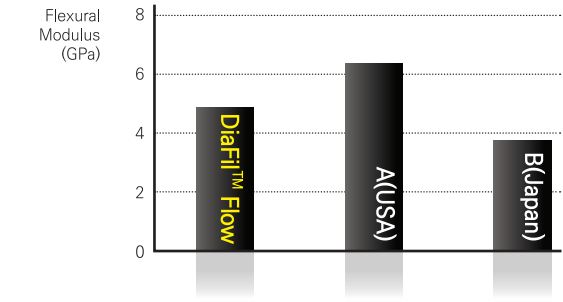
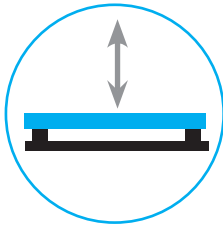
Compressive Strength

Compressive strength is particularly important because it is related with masticating forces. Rods are made of the material and simultaneous forces are applied to the opposite ends of the sample length vertically. The sample failure is a result of shear and tensile forces.



Flexural Modulus

Flexural modulus is a method of defining a material's stiffness. A low modulus indicates high flexible material.



These tests are measured in the laboratory (DiaDent R&D Team 2018)

●RESTORATION WITH DIAFIL™FLOW



DIAPLUS™

SINGLE COMPONENT BONDING AGENT

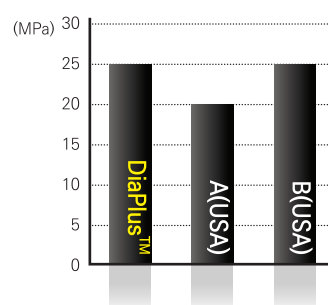
Recommended for all direct composite restorations, light-cured bonding procedures



Benefits

- High dentin, enamel bond strength performance
- Available in all classes of direct composite restoration
- Indirect restorations of Porcelain, Amalgam or Composite Repair after light curing with a minimal film thickness
- Ethanol-based bonding agent enables to maintain its exceptional bond strength

Shear bond strength(MPa)



Packages

- ITEM #A2001-2101
 - one-bottle bonding agent (1 bottle x 5ml)

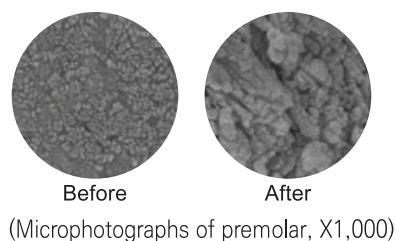
DISPOSABLE BRUSHES



- Flexible adhesive tip allows restorations and small objects of all kind to be picked up, held, carried and placed quickly and easily
- These brushes are included DiaPlus G7's Regular Package

| Size | ITEM NO. |
|--------|-----------|
| Small | 2001-6301 |
| Medium | 2001-6302 |
| Large | 2001-6303 |

(Pkg. of 100)

DIAETCH™ 37%**A 37% ETCHING GEL PHOSPHORIC ACID**

Before After
(Microphotographs of premolar, X1,000)

A phosphoric acid is used in etch enamel and/or dentin

Benefits

- Phosphoric acid etching of enamel and dentin with ideal thickness
- Quick and effective application to the desired place
- Enables to rinse completely and easily from the tooth surface
- High biocompatibility

Packages**Economic Package Type A**

- ITEM #A2001-3101 - 5 Syringes x 5ml and 20 disposable tips

Regular Package

- ITEM #A2001-3103 - 2 Syringes x 3ml and 10 disposable tips

Refill Package Type A

- ITEM #A2001-3202 - 1 Syringe x 5ml and 5 disposable tips

DiaCem™ TempNE**NON EUGENOL TEMPORARY CEMENT**

- Non-Eugenol Temporary cement for trial cementing restorations or temporary crowns and bridges

**Features**

- Easy and precise direct dosing
- No hand mixing and Stable mix of base and catalyst viscosity with the automix tip
- High bond strength to prevent leakage and sensitivity to cold and heat
- Easy removal for the patient comfort
- Low film thickness with high compressive and flexural strength
- Fast working time(3 min) and setting time(5 min in the mouth)

Packages

- ITEM #2004-2101 2 Syringes of 10g, 10 Automix tips
- ITEM #2001-6112 20 Automix tips

D-LUX

CORDLESS LED CURING LIGHT

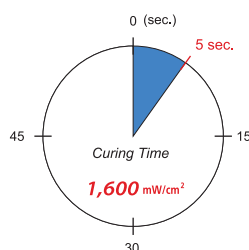
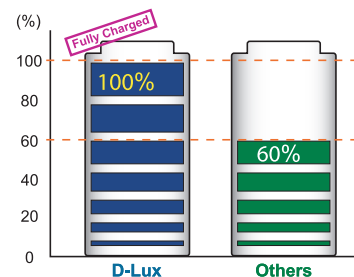


D-Lux is a new advanced cordless LED curing light. Made from the highest quality aluminum, D-Lux dissipates heat quickly to prevent overheating problem so that it can produce the maximum light intensity safely and consistently.

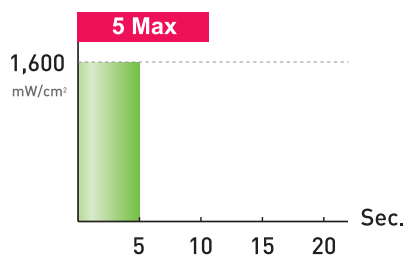
Features

- **OLED panel:** unique and advanced one-button control
- A high intensity of **1,600 mW/cm²** offers extremely short curing times of no more than **5 seconds**
- Cordless, highly portable and lightweight (only 155g)
- Unique ergonomic design: provides comfortable grip and easy-to-read OLED panel
- Durable one-piece aluminum design is robust and easy to disinfect
- High-performance lithium-ion battery technology:
 - A new fully charged battery provides 160 x 10-second cures
 - OLED panel conveniently indicates battery life and a countdown timer for the next needed charge
 - Battery can be fully recharged in 90 minutes
- **5 versatile curing modes** for every indications
- Easy to change the battery pack

Product Features

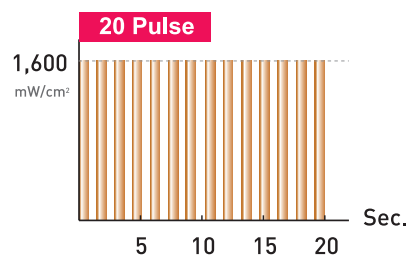
Simple & Intuitive
OLED ButtonHigh Intensity
OutputFast Charging
System (90min)

5 Curing Modes



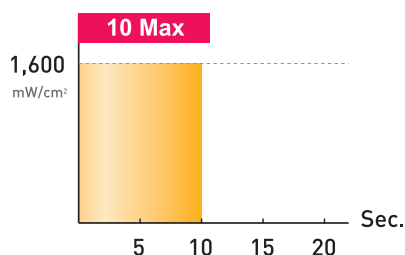
5 Max:

Maximum light intensity output for 5 seconds



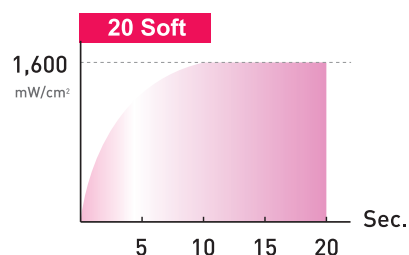
20 Pulse:

Pulses every 0.15 seconds for 20 seconds at maximum light intensity



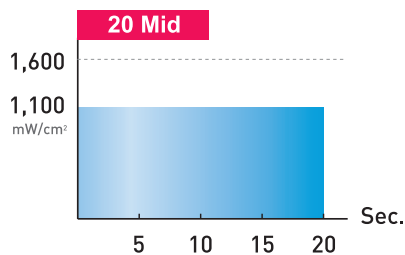
10 Max:

Maximum light intensity output for 10 seconds



20 Soft:

An initial 10% output of maximum light intensity that gradually increases to full power in 10 seconds, followed by 10 seconds output at full power



20 Mid:

70% output of maximum light intensity for 20 seconds



Package

- ITEM #4004-1001 Regular Kit
 - D-Lux Handpiece & Charger
 - Accessories: Light Guide(11×11mm), Plastic Protector, Power Supply and Cord

Device Part Codes

- ITEM #4004-1110 Handpiece
- ITEM #4004-1120 Charger
- ITEM #4004-1130 Light Guide(11×11mm)
- ITEM #4004-1150 Battery Pack
- ITEM #4004-1160 Plastic Protector
- ITEM #4004-1170 Power Supply (Adapter)
- ITEM #4004-1171 Power Cord



ENDODONTIC INSTRUMENTS

- Nickel Titanium Rotary Files
- EDTA Root Canal Preparation Cream
- EDTA 17% Solution
- Endodontic Micro-Motor
- Flexible K-File
- Lentulo
- Probe File
- Gate Drills
- Peeso Reamers
- Nickel Titanium Hand Files
- Stainless Steel Hand Files
- Stainless Steel Spreader
- Stainless Steel Plugger
- Endo Condenser
- Endo Gauges
- Irrigation Syringes
- Endodontic Irrigation Tips

DIA-PT™ FILE & DIA-X FILE

NICKEL TITANIUM ROTARY FILES

• Superior Cutting Efficiency

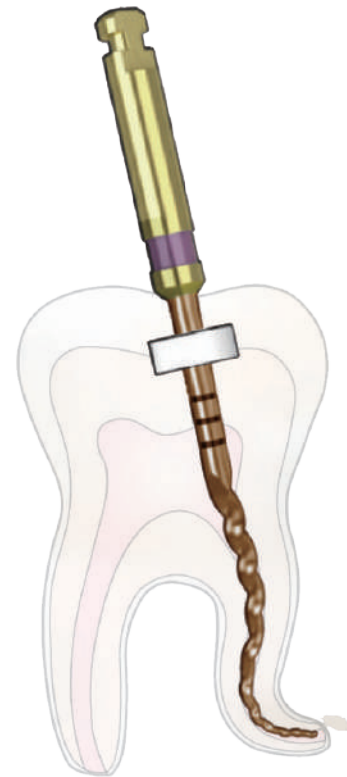
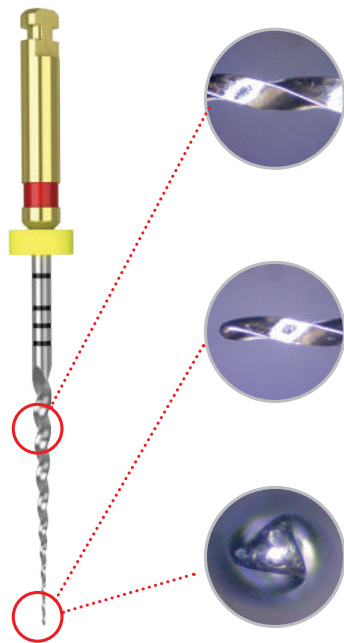
- Allows stronger and more sharp blades to more deeper in the canal
- A triangular cross section reduces contact with the canal wall

• High Flexibility

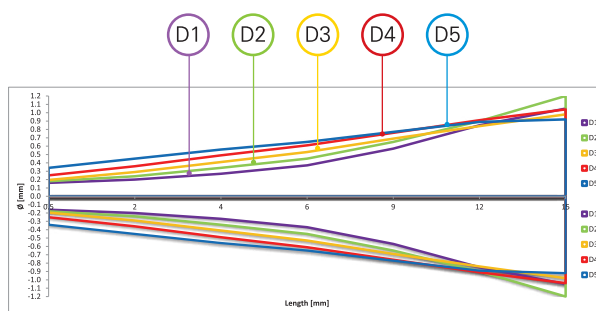
- Offers outstanding flexibility and reduces a user fatigue
- Has high corrosion resistance with a coated surface of files

• Short Shaping Time

- Decreases total shaping time versus a traditional rotary technique
- Easily shape in calcified or highly curved canals



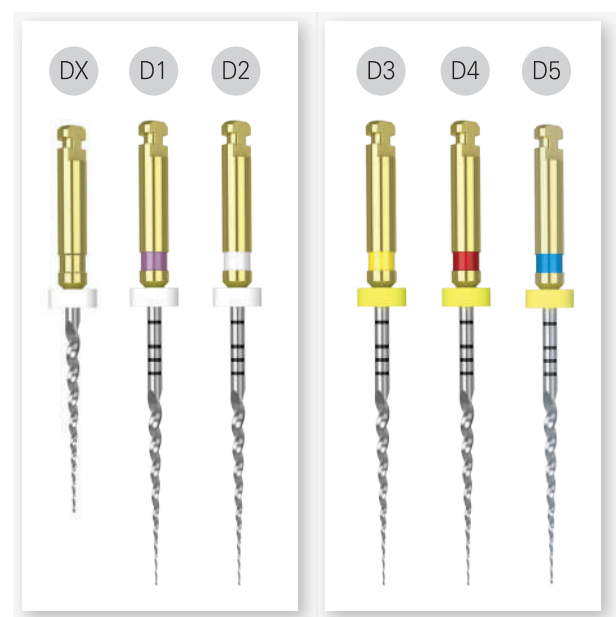
Rate of Taper



- Easy to confirm the size due to using Depth Markings and ISO color coded.
- Minimizes pressure to files with advanced stability.
- Improved performance for entering root canal and efficiently removable debris.
- Makes it excellent cutting.

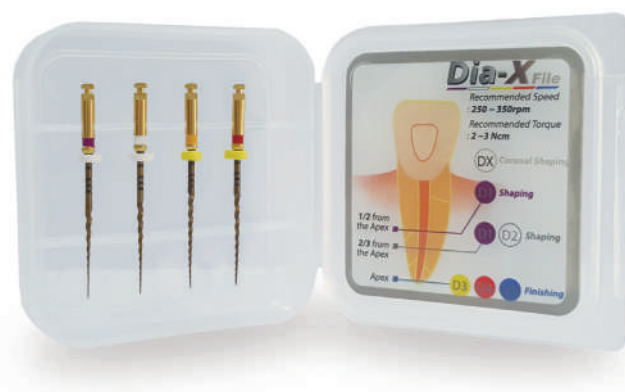
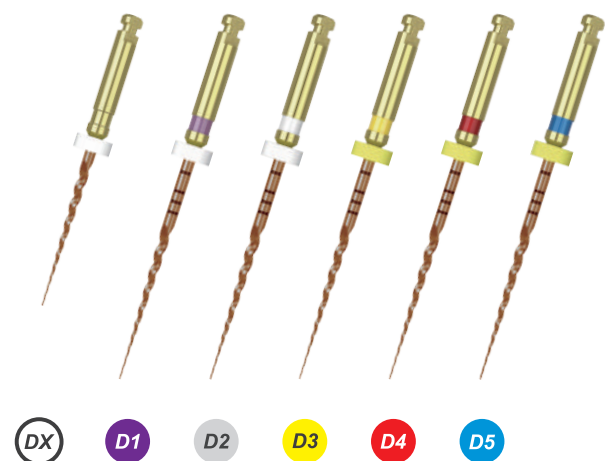
Shaping

Finishing



DIA-X FILE

NICKEL TITANIUM ROTARY FILES WITH GOLD HEAT TREATMENT



Dia-X File is the nickel titanium rotary files with **Gold Heat Treatment** can be achieved greater flexibility than other Nickel Titanium Files and offer smoother and safer progression in the root canal. The fracture resistance has been increased 143% after Gold Heat Treatment.

| Size | 19MM | 21MM | 25MM |
|-------------|---------|---------|---------|
| #DX | 571-100 | | |
| #D1 | | 571-101 | 571-201 |
| #D2 | | 571-102 | 571-202 |
| #D3 | | 571-103 | 571-203 |
| #D4 | | 571-104 | 571-204 |
| #D5 | | 571-105 | 571-205 |
| #Asst D1/D4 | | 571-191 | 571-291 |

(Pkg. of 4)

DIA-PT™ FILE

NICKEL TITANIUM ROTARY FILES

Dia-PT™ File ensures rapid and high quality canal shaping with new cutting efficiency. The difference of Dia-PT™ File nickel-titanium rotary files with a uniform shape can be achieved superior flexibility and precision for successful procedures.

| Size | 19MM | 21MM | 25MM |
|-------------|---------|---------|---------|
| #DX | 561-100 | | |
| #D1 | | 561-101 | 561-201 |
| #D2 | | 561-102 | 561-202 |
| #D3 | | 561-103 | 561-203 |
| #D4 | | 561-104 | 561-204 |
| #D5 | | 561-105 | 561-205 |
| #Asst D1/D4 | | 561-191 | 561-291 |

(Pkg. of 4)



FILE HAND GRIP

• ITEM #702-101

- Designed to use Dia-PT™ File and Dia-X File for the Hand Use.
- Autoclavable
- Packed 4pcs



DIA-PT™ FILE & DIA-X FILE

NICKEL TITANIUM ROTARY FILES

INSTRUCTION

DX

- Check the working length with X-ray.
- Prepare the straight-line access to canal orifice.

D1

- The D1 expands the glide path and enlarges to widen the coronal portion of canal. Always irrigate the canal with NaOCl before engaging the file. Gently work D1 until a smooth glide path is confirmed.
- The D1 into the canal and follow the glide path and laterally brush before light resistance is appeared. And cut dentin on the outstroke to improve straight-line access and apical progression.
- Continue shaping and brushing with the D1 until the depth of the #15 hand file is reached.
- Check the working length with the #15 hand file and Apex locator.

D1 D2

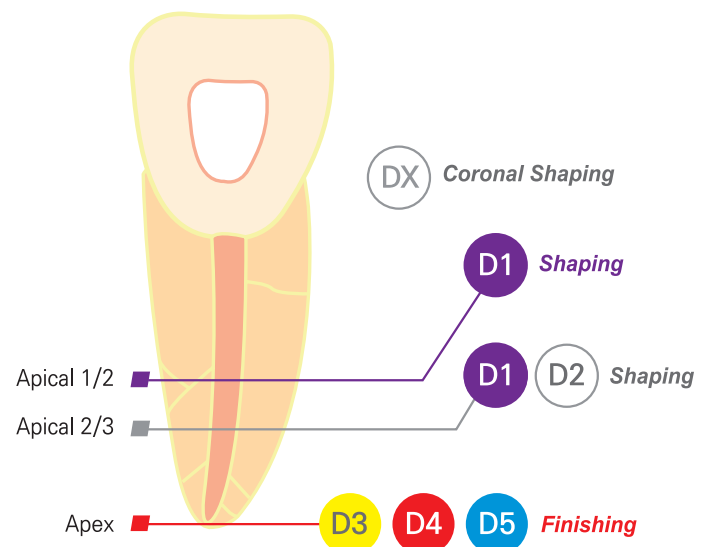
- The D2 enlarges to the apical 2/3.
- Use D1 or D2 until working length is reached with a brushing action.
- Confirm working length frequently as shaping the severely curved canals.

D3 D4 D5

- Use D3 as an In-and-out Pecking Motion until the depth of the #20 hand file is reached.
- If the #20 hand file is loose at length, proceed to the D4 with corresponding the #25 hand file.
- If the #25 hand file is loose at length, proceed to the D5 with corresponding the #30 hand file.

Dia-PT™ File & DIA-X File

- RECOMMENDED SPEED : 250~350RPM
- RECOMMENDED TORQUE : 2~3 NCM

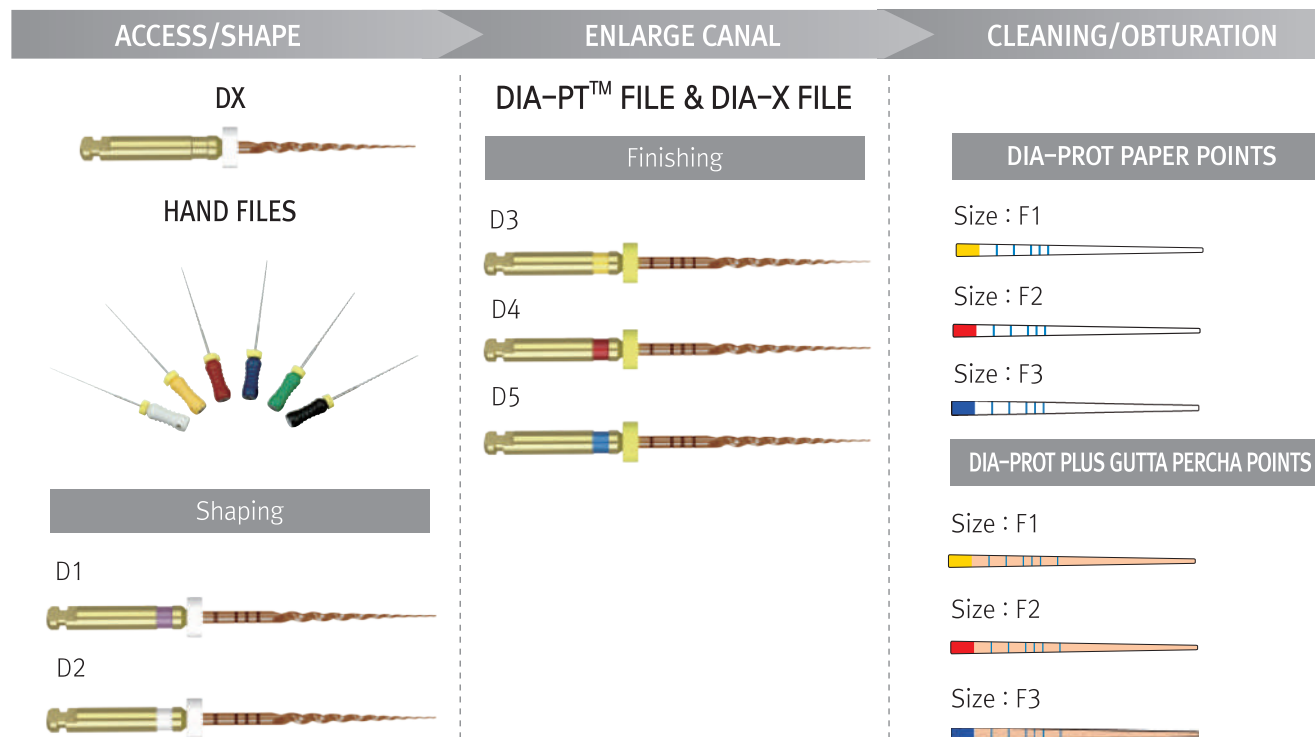
**TIP**

- Inspect files for distortion or wear, such as uneven flutes, dull spots or bending.
- Lubricate files generously with DIAPREP™ PRO.
- Remove the debris from its flutes before continuing.
- Irrigate and re-irrigate after using each rotary file.
- Dia-PT™ file & Dia-X File should be used at a constant rotation and stable speed of 300 rpm to avoid the file fracture.
- Use very light pressure. Never force instruments to working length.
- Use the files for no more than one or two seconds in the canal.
- Autoclave files always after use.

DIA-PT™ FILE & DIA-X FILE

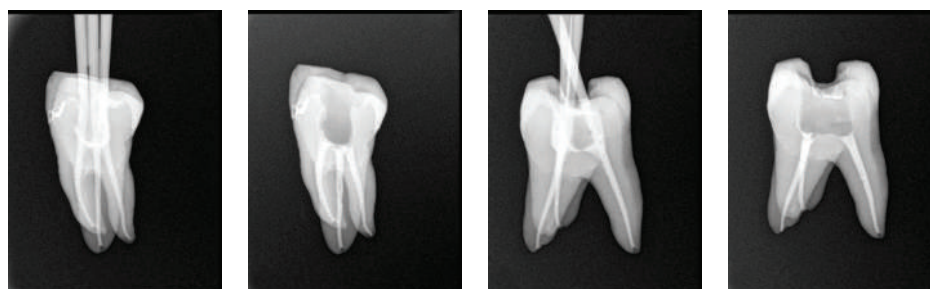
NICKEL TITANIUM ROTARY FILES

CLINICAL PROCESS





Radiographs

Precisely shaped and sealed root canals after the treatment with Dia-PT™ File & DIA-X File.



ENDO STOPS



- ITEM #701-291  
 - Directional type
 - 120 Stops and Assorted colors packed in a plastic box
 - These endo stops can not be used with ENDO STOP DISPENSER



DIAPREP™ PRO**EDTA ROOT CANAL PREPARATION CREAM**

EDTA Cream with Urea Peroxide, used as an irrigation agent for chemo-mechanical preparation of the root canal.

**Packages**

- **ITEM #2002-4100**
 - 2 syringes of 6g and 10 disposable tips with 1 protective cap
- **ITEM #2001-6119**
 - 10 disposable tips

Characteristics

- Debridement in the root canal
- Dissolution of pulp remnants
- Removal of smear layer
- Facile movements of canal instruments
- Microbicidal treatment within the canal
- Clearance of dentin tubules and apical area

Benefits

- EDTA removes smear layer, softens dentin, and facilitates the removal of calcific obstruction.
- Urea Peroxide reacts with Sodium Hypochlorite to produce oxygen bubbles that flush out debris within the canal.
- The lubricant medium facilitates instrument movement within the canal to eliminate instrument binding or breakage.
- Unclogged dentin tubules and apical area permit better penetration of root canal medicaments and fillings.
- Provides rapid cleansing and enlarging of canals due to EDTA, which softens walls and smooth calcium deposits.
- Easier placement into canals than liquids.

ENDO-CLEAR™**EDTA ROOT CANAL CLEANSER(EDTA 17%)**

Endo-Clear™ is the EDTA root canal cleanser, colorless and clear without foreign matters and effectively cleans the canal and removes smear layer. Chelating effect of Endo-Clear™ softens root canal wall, dissolves calcium and removes it.

Benefits

- Easy to enlarge the canal and clean it and eliminate remnants from the root canal
- Superior microbicidal treatment within the canal and dissolution effect of pulp remnants
- Great removal effect of the smear layer being based on water
- Get to apical area easily where hard for gel type to reach
- Effectively remove smear layer around apical area better than cream type

Packages

- **ITEM #2002-5002** 100ml Endo Clear Solution



DIA-GEAR

ENDODONTIC MICRO-MOTOR

- Cordless and simple interface design
- Ergonomic and compact body
- Push button type head for easy exchange files
- Program setting memorized for easy operation

Features

- **Endodontic micro-motor, specifically designed to drive Nickel Titanium Rotary Files**
 - RPM: 100-600RPM
 - Torque: 1-4N.cm
 - Gear ratio: 20:1
 - Rotation mode: 1, 2
- **Program function:**
 - 5 memory programs of (Gear ratio, Torque, RPM, Direction mode) are available to set
- **Setting torque limit function**
 - Once actual load on the files is higher than preset torque, it stops working automatically
- **Rotation mode**

Users can choose auto-rotation mode according to operation condition

 - Mode 1: Once actual torque is over the preset torque, the file moves in reverse rotation. After removing the load, it stops
 - Mode 2: Once actual torque is over the preset torque, the file runs in reverse automatically and it turns forward rotation again once load released
- **Auto-off function**
 - Power is off with beep sound after 4 minutes without operation

Package

- ITEM #4006-1001 Regular Kit

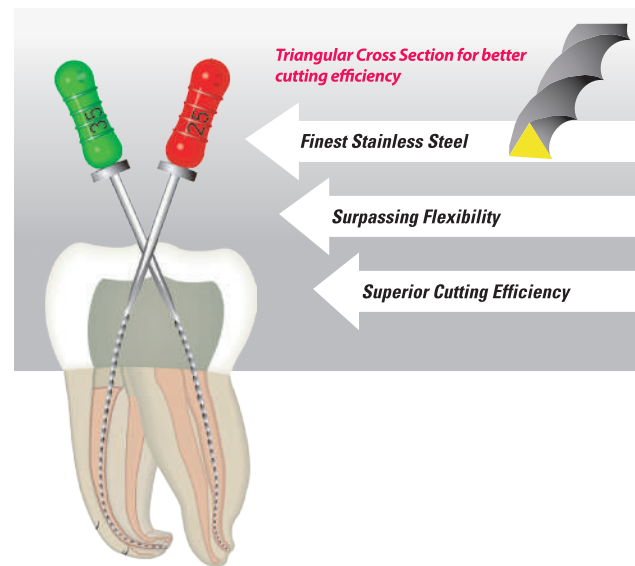
Accessories

- ITEM #4006-1101 Handpiece
- ITEM #4006-1201 Charger
- ITEM #4006-1301 Angle



DIA-FLEX FILE

FLEXIBLE K-FILE



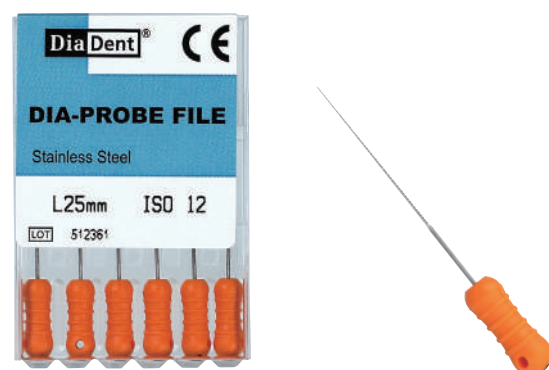
- Made of high-quality Stainless Steel for creating a more fracture-resistant shape and edge
- Enables a complete preparation of even severely curved and narrow canals
- Offers better Cutting Power and Flexibility to shape any root canals easily, safely and very fast
- Available in Sizes 15 through 40 and 21mm, 25mm and 31mm lengths

| Size | 21MM | 25MM | 31MM |
|--------|---------|---------|---------|
| #15 | 505-103 | 505-203 | 505-303 |
| #20 | 505-104 | 505-204 | 505-304 |
| #25 | 505-105 | 505-205 | 505-305 |
| #30 | 505-106 | 505-206 | 505-306 |
| #35 | 505-107 | 505-207 | 505-307 |
| #40 | 505-108 | 505-208 | 505-308 |
| #15/40 | 505-191 | 505-291 | 505-391 |

(Pkg. of 6)

DIA-SPIRAL FILLER

DIA-PROBE FILE



- Lentulo Paste filler used to evenly distribute root canal sealer and cement in the root canal system
- Conical shape made from grinded wire and made of high grade stainless steel with gradual spirals
- Rather stiff without the safety spiral
- Available in Sizes 25 to 40 and 21mm, 25mm lengths

- Canal Probe
- The minimal taper helps to perform intermediate steps in the calcified or curved canals
- Available in Size #12 and 21mm, 25mm lengths

| Size | 21MM | 25MM |
|--------|---------|---------|
| #25 | 507-105 | 507-205 |
| #30 | 507-106 | 507-206 |
| #35 | 507-107 | 507-207 |
| #40 | 507-108 | 507-208 |
| #25/40 | 507-191 | 507-291 |

(Pkg. of 4)

| Size | 21MM | 25MM |
|------|---------|---------|
| #12 | 506-101 | 506-201 |

(Pkg. of 6)

GATE DRILLS

- Used for time-saving preparation of the upper and middle part of non-curved canal or the straight part of curved canal effectively and creating the excellent access for Reamers and Files.
- Enlarge the straight coronal portion of the canal with Gate Drills and then step down with Endodontic Files using the biggest size firstly as the Crown Down Technique.
- Superior Stainless Steel with the improved cutting capacity.
- Circle ring is coded on the shank.
- Recommended Speed: 800~1200r/min

| Size | 28mm | 32mm |
|----------|---------|---------|
| #1 | 531-101 | 531-201 |
| #2 | 531-102 | 531-202 |
| #3 | 531-103 | 531-203 |
| #4 | 531-104 | 531-204 |
| #5 | 531-105 | 531-205 |
| #6 | 531-106 | 531-206 |
| #Asst1/6 | 531-191 | 531-291 |

(Pkg. of 6)



PEESO REAMERS

- Used for the preparation of coronal third and picking up the fillings inside the root canal.
- Often used for the post path.
- Excellent stainless steel with a sharper blade to provide the rapid enlargement.
- Circle ring is coded on the shank.
- Recommended speed: 800~1200r/min

| Size | 28mm | 32mm |
|----------|---------|---------|
| #1 | 541-101 | 541-201 |
| #2 | 541-102 | 541-202 |
| #3 | 541-103 | 541-203 |
| #4 | 541-104 | 541-204 |
| #5 | 541-105 | 541-205 |
| #6 | 541-106 | 541-206 |
| #Asst1/6 | 541-191 | 541-291 |

(Pkg. of 6)



ENDODONTIC NICKEL TITANIUM HAND FILES/PLASTIC PACKAGE

Increased Flexibility

: NiTi Shaft is made of premium Nickel-Titanium with 5 times the flexibility compared to Stainless Steel Files.

Strength

: NiTi has 10 times the stress resistance compared to Stainless Steel Files.

Convenience

: Produces smooth and progressive enlargement of root canal.

NiTi follow existing canal path and has memory so there is no need to Pre-Bend the files.

Efficiency

: Color Coded handles and pre-inserted silicone stops.

Safety

: NiTi resists spontaneous breakage.

Increased angular rotation reduces fracture.

NiTi decreases zipping and stripping.



NITI REAMERS



NICKEL-TITANIUM REAMERS(.02 TAPER)

| size | 21MM | 25MM |
|--------|-----------|-----------|
| #8 | NT501-101 | NT501-201 |
| #10 | NT501-102 | NT501-202 |
| #15 | NT501-103 | NT501-203 |
| #20 | NT501-104 | NT501-204 |
| #25 | NT501-105 | NT501-205 |
| #30 | NT501-106 | NT501-206 |
| #35 | NT501-107 | NT501-207 |
| #40 | NT501-108 | NT501-208 |
| #45 | NT501-109 | NT501-209 |
| #50 | NT501-110 | NT501-210 |
| #55 | NT501-111 | NT501-211 |
| #60 | NT501-112 | NT501-212 |
| #70 | NT501-113 | NT501-213 |
| #80 | NT501-114 | NT501-214 |
| #15/40 | NT501-191 | NT501-291 |
| #45/80 | NT501-192 | NT501-292 |

(Pkg. of 6)



NITI K-FILES



NICKEL-TITANIUM K-FILES(.02 TAPER)

| size | 21MM | 25MM |
|--------|-----------|-----------|
| #8 | NT502-101 | NT502-201 |
| #10 | NT502-102 | NT502-202 |
| #15 | NT502-103 | NT502-203 |
| #20 | NT502-104 | NT502-204 |
| #25 | NT502-105 | NT502-205 |
| #30 | NT502-106 | NT502-206 |
| #35 | NT502-107 | NT502-207 |
| #40 | NT502-108 | NT502-208 |
| #45 | NT502-109 | NT502-209 |
| #50 | NT502-110 | NT502-210 |
| #55 | NT502-111 | NT502-211 |
| #60 | NT502-112 | NT502-212 |
| #70 | NT502-113 | NT502-213 |
| #80 | NT502-114 | NT502-214 |
| #15/40 | NT502-191 | NT502-291 |
| #45/80 | NT502-192 | NT502-292 |

(Pkg. of 6)



NITI H-FILES



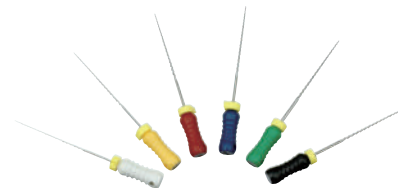
NICKEL-TITANIUM H-FILES(.02 TAPER)

| size | 21MM | 25MM |
|--------|-----------|-----------|
| #8 | NT503-101 | NT503-201 |
| #10 | NT503-102 | NT503-202 |
| #15 | NT503-103 | NT503-203 |
| #20 | NT503-104 | NT503-204 |
| #25 | NT503-105 | NT503-205 |
| #30 | NT503-106 | NT503-206 |
| #35 | NT503-107 | NT503-207 |
| #40 | NT503-108 | NT503-208 |
| #45 | NT503-109 | NT503-209 |
| #50 | NT503-110 | NT503-210 |
| #55 | NT503-111 | NT503-211 |
| #60 | NT503-112 | NT503-212 |
| #70 | NT503-113 | NT503-213 |
| #80 | NT503-114 | NT503-214 |
| #15/40 | NT503-191 | NT503-291 |
| #45/80 | NT503-192 | NT503-292 |

(Pkg. of 6)

ENDODONTIC STAINLESS STEEL HAND FILES

- Root canal cleaning and shaping instruments
- Offers superior cutting efficiency on insertion and withdrawal and procession handling
- Ergonomic color coded handle provides comfort and excellent tactile feedback
- Available in sizes 8 through 80 and 21mm, 25mm & 31mm lengths



REAMERS



- Made from Stainless Steel wire that is ground to triangular shape and twisted

| size | 21MM | 25MM | 31MM |
|---------|-----------|-----------|-----------|
| # 8 | SS501-101 | SS501-201 | SS501-301 |
| # 10 | SS501-102 | SS501-202 | SS501-302 |
| # 15 | SS501-103 | SS501-203 | SS501-303 |
| # 20 | SS501-104 | SS501-204 | SS501-304 |
| # 25 | SS501-105 | SS501-205 | SS501-305 |
| # 30 | SS501-106 | SS501-206 | SS501-306 |
| # 35 | SS501-107 | SS501-207 | SS501-307 |
| # 40 | SS501-108 | SS501-208 | SS501-308 |
| # 45 | SS501-109 | SS501-209 | SS501-309 |
| # 50 | SS501-110 | SS501-210 | SS501-310 |
| # 55 | SS501-111 | SS501-211 | SS501-311 |
| # 60 | SS501-112 | SS501-212 | SS501-312 |
| # 70 | SS501-113 | SS501-213 | SS501-313 |
| # 80 | SS501-114 | SS501-214 | SS501-314 |
| # 15/40 | SS501-191 | SS501-291 | SS501-391 |
| # 45/80 | SS501-192 | SS501-292 | SS501-392 |

(Pkg. of 6)

K-FILES



- Designed to clean and shape root canals
- Produced to give operators a smooth tactile sense inside the canal during instrument

| size | 21MM | 25MM | 31MM |
|---------|-----------|-----------|-----------|
| # 8 | SS502-101 | SS502-201 | SS502-301 |
| # 10 | SS502-102 | SS502-202 | SS502-302 |
| # 15 | SS502-103 | SS502-203 | SS502-303 |
| # 20 | SS502-104 | SS502-204 | SS502-304 |
| # 25 | SS502-105 | SS502-205 | SS502-305 |
| # 30 | SS502-106 | SS502-206 | SS502-306 |
| # 35 | SS502-107 | SS502-207 | SS502-307 |
| # 40 | SS502-108 | SS502-208 | SS502-308 |
| # 45 | SS502-109 | SS502-209 | SS502-309 |
| # 50 | SS502-110 | SS502-210 | SS502-310 |
| # 55 | SS502-111 | SS502-211 | SS502-311 |
| # 60 | SS502-112 | SS502-212 | SS502-312 |
| # 70 | SS502-113 | SS502-213 | SS502-313 |
| # 80 | SS502-114 | SS502-214 | SS502-314 |
| # 15/40 | SS502-191 | SS502-291 | SS502-391 |
| # 45/80 | SS502-192 | SS502-292 | SS502-392 |

(Pkg. of 6)

H-FILES



- Ground from Stainless Steel wire
- The flute depth increases with the taper, creating a shaper, more flexible instrument

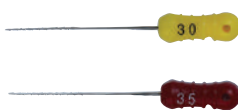
| size | 21MM | 25MM | 31MM |
|---------|-----------|-----------|-----------|
| # 8 | SS503-101 | SS503-201 | SS503-301 |
| # 10 | SS503-102 | SS503-202 | SS503-302 |
| # 15 | SS503-103 | SS503-203 | SS503-303 |
| # 20 | SS503-104 | SS503-204 | SS503-304 |
| # 25 | SS503-105 | SS503-205 | SS503-305 |
| # 30 | SS503-106 | SS503-206 | SS503-306 |
| # 35 | SS503-107 | SS503-207 | SS503-307 |
| # 40 | SS503-108 | SS503-208 | SS503-308 |
| # 45 | SS503-109 | SS503-209 | SS503-309 |
| # 50 | SS503-110 | SS503-210 | SS503-310 |
| # 55 | SS503-111 | SS503-211 | SS503-311 |
| # 60 | SS503-112 | SS503-212 | SS503-312 |
| # 70 | SS503-113 | SS503-213 | SS503-313 |
| # 80 | SS503-114 | SS503-214 | SS503-314 |
| # 15/40 | SS503-191 | SS503-291 | SS503-391 |
| # 45/80 | SS503-192 | SS503-292 | SS503-392 |

(Pkg. of 6)

BARBED BROACHES



- Designed to remove pulp tissue
- Put it straight into the root canal, rotation at 180° and pull out



| size | 21MM | 25MM |
|----------------|---------|---------|
| #20(XXXXF) | 504-001 | 504-201 |
| #25(XXF) | 504-002 | 504-202 |
| #30(XF) | 504-003 | 504-203 |
| #35(XF) | 504-004 | 504-204 |
| #40(F) | 504-005 | 504-205 |
| #25/40(XXXF/F) | 504-092 | 504-292 |

(Pkg. of 6)

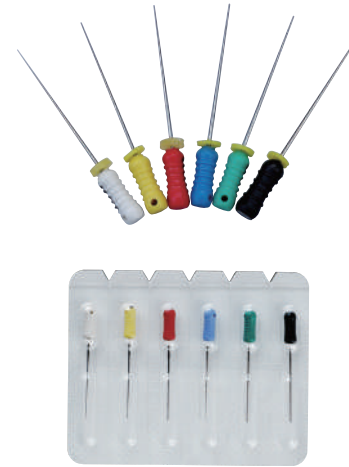
SPREADER



- Used for the lateral condensation of root canal fillings.
- Made of Stainless Steel.
- High Resistance to wear and Excellent Condensation Efficiency.
- 6pcs in a blister package

| size | 21MM | 25MM |
|--------|---------|---------|
| #15 | 520-103 | 520-203 |
| #20 | 520-104 | 520-204 |
| #25 | 520-105 | 520-205 |
| #30 | 520-106 | 520-206 |
| #35 | 520-107 | 520-207 |
| #40 | 520-108 | 520-208 |
| #15/40 | 520-191 | 520-291 |

PLUGGER



- Used for the vertical condensation of root canal fillings.
- Made of Stainless Steel.
- High Resistance to wear and Excellent Condensation Efficiency.
- 6pcs in a blister package

| size | 21MM | 25MM |
|--------|---------|---------|
| #15 | 521-103 | 521-203 |
| #20 | 521-104 | 521-204 |
| #25 | 521-105 | 521-205 |
| #30 | 521-106 | 521-206 |
| #35 | 521-107 | 521-207 |
| #40 | 521-108 | 521-208 |
| #15/40 | 521-191 | 521-291 |

DIA-KONDENSOR



- Having both a nickel-titanium end and a stainless steel end, it can be used in any common endodontic obturation technique including warm and cold condensation.
- Excellent durability.
- Can be supplied 1 piece or a set included each 4 sizes.
- Convenient use with color-coding on the condensers.
- Lightweight and comfort design

| size | ITEM No. |
|-----------------|----------|
| #35/70(Green) | 551-101 |
| #40/80(Black) | 551-102 |
| #50/100(Yellow) | 551-103 |
| #60/120(Blue) | 551-104 |
| Set (4pcs) | 551-191 |

DIA-ENDORING

• ITEM #850-001



- A convenient ring for Hand & Rotary Files.
- Gauges from 1 to 30mm.
- A simple & practical design for measuring files.
- Gold plated ring prevents color change.
- Dimension: 45×25×15m/m (W×H×D)

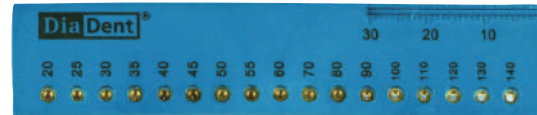


DIA-GP GAUGE

• ITEM #781-001



- Designed to size a perfect master cone from any Gutta Percha Points.
- Drop it into the apical size and cut off with a blade.
- Autoclavable
- Dimensions: 92×3×20m/m(W×H×D)



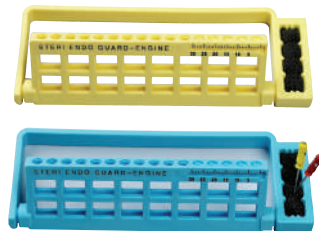
STERI ENDO GUARD W/RULER(ENGINE FILE)

• ITEM #716-203 Yellow

• ITEM #716-206 Blue



- Holds 16 NiTi Rotary Files.
- Right or left hand use.
- Available to insert sponge to clean or hold files.
- Diameter: 75m/m,
- Height: 35m/m

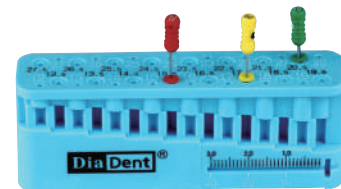


FILE MEASURE SET(PLASTIC)

• ITEM #780-001



- Holds 32 Measuring Grades.
- Gauge from 12 to 27.5m/m, Including half measurements.
- Dimensions: 87×31×20m/m (W×H×D)



DIAFLEX™

IRRIGATION SYRINGE FOR ROOT CANAL



- Flexible soft polypropylene tip syringe for root canal irrigation.
- Autoclavable and chemoclavable for multiple use up to 50 times.
- 1.3ml volume imprinted at intervals of 1mm.
- Provides maximum clinical effect in a minimum of time.
- DiaFlex is compatible with **Luer Lock Syringes**

DiaFlex – III

• ITEM #1003-301

- Package of 3 color coded syringes, 20 changeable tips and silicone oil

DiaFlex – V

• ITEM #1003-501

- Package of 5 color coded syringes, 20 changeable tips and silicone oil

• ITEM #1001-320

Clear Disposable Tips(Curved)

- 20 disposable tips

WET-HEAT
AUTOCLAVE

ALUMINUM

STAINLESS
STEEL

PLASTIC



SILICONE



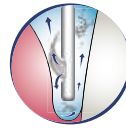
GLASS

STERI. IRRIGATION TIPS-SIDE OPEN TYPE

- Disposable Endodontic & Periodontal Irrigation Tips with Safety.
- Unique design with a side-port for superior effectiveness and patient comfort in irrigating root canals and periodontal pockets.
- Pre-sterilized by E.O Gas.
- Use with Luer Lock Syringes.
- Side-Port and Closed-end Irrigation tips.

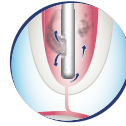


31G 30G 28G



PERIODONTAL POCKETS

- Side-port design make an effective irrigate pockets and closed, rounded tip can reduce the risk of tissue damage.

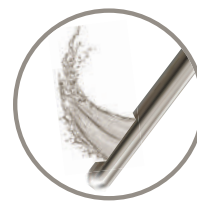
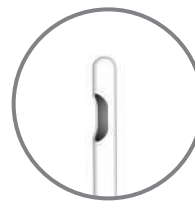


ROOT CANALS

- Side-port dispersal can create an upward flushing motion for the complete root canal preparations and cleanse the gingival sulci fully without damaging tissue.

| size | Color | ITEM No. |
|-------------------|-------------|----------|
| 31G (0.25 x 25mm) | Clear White | 951-101A |
| 30G (0.30 x 25mm) | Yellow | 951-102A |
| 28G (0.36 x 25mm) | Blue Green | 951-103A |

(Pkg. of 50)



IRRIGATION TIPS-END OPEN TYPE



< 22G >

< 20G >



- Disposable Endodontic & Periodontal Irrigation tips
- Use with Luer Lock Syringes.
- Thoroughly irrigate root canal preparations.
- Round end tip can prevent the secondary injury during the use.
- Widest selection of tips: 6 sizes from 18G to 27G.

| size | Color | ITEM No. |
|------------------|-------------|----------|
| 18G (1.2 x 25mm) | Pink | 951-201A |
| 19G (1.1 x 25mm) | Cream | 951-202A |
| 20G (0.9 x 25mm) | Yellow | 951-203A |
| 22G (0.7 x 25mm) | Black | 951-204A |
| 25G (0.5 x 25mm) | Orange | 951-205A |
| 27G (0.4 x 25mm) | Medium Grey | 951-206A |

(Pkg. of 100)



MISCELLANEOUS ITEMS

- Aluminum Endo Storage Boxes
- Prophylactic Brushes
- Prophylactic Cups

SMALL ROUND TYPE B

- ITEM # 802-003 Red
- ITEM # 802-004 Blue



- Ideal for Organizing Hand Files.
- Holds 20 instruments.
- Removable Insert for Cleaning.
- Diameter: 40m/m, Height: 60m/m



SMALL SQUARE TYPE B

- ITEM #806-003 Red
- ITEM #806-004 Blue



- Ideal for Organizing Hand Files.
- Holds 30 Endo Instruments.
- Removable Insert for Cleaning.
- Dimensions: 50×50×45m/m (W×H×D)



MEDIUM OBLONG TYPE B

- ITEM #809-003 Red
- ITEM #809-004 Blue



- A Versatile & Practical Organizer for Hand & Rotary File as well as Cups for Gutta Percha & Paper Points.
- Holds 60 Instruments, 4 Silicone Cups.
- Removable Insert for Cleaning.
- Dimensions: 130×50×50m/m (W×H×D)



MEDIUM SQUARE

- ITEM #804-003 Red
- ITEM #804-004 Blue



- A Versatile & Practical Organizer with a Clean Grip for Hand & Rotary File as well as Cups for Gutta Percha & Paper Points.
- Features a Endo Meter for measuring Files & Points.
- Holds 5 Burs, 30 Instruments, 6 Silicone Cups, 1 Clean Grip, Endo Meter and 1 location for small instruments.
- Removable Insert for Cleaning.
- Dimensions: 120×50×80m/m (W×H×D)



DIA-DELUXE

- ITEM #811-003 Red



- DiaDent's Ultimate Box for Organizing your Files & Points. Holds 4 Spreaders/Pluggers, 56(21mm) & 48(25mm) Instruments, 6 Gates Glidens, 10 Barbed Broaches, 28 Cups, Section for Cotton.
- Removable Insert for Cleaning.
- Dimensions: 215×50×100m/m (W×H×D)

WET-HEAT
AUTOCLAVE

ALUMINIUM

STAINLESS
STEEL

PLASTIC



SILICONE



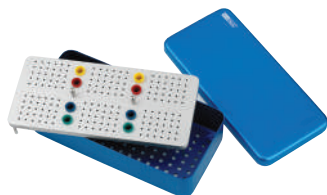
GLASS

LARGE OBLONG TYPE A

• ITEM #812-004 Blue



- A Simple & Effective Organizer with Sections for your Hand Files.
- Holds 180 Endo Instruments, 8 Color Coded Silicone Cups for Points, perforated bottom case.
- Removable Insert for Cleaning.
- Dimensions: 218×53×105m/m (W×H×D)



LARGE OBLONG TYPE B

• ITEM #812-005



- An Organizer for Hand & Rotary Files as well as Points.
- Store your Instruments in One Place.
- Holds 357 Endo Instruments, 21 Silicone Cups for Points.
- Removable Insert for Cleaning.
- Dimensions: 205×53×105m/m (W×H×D)

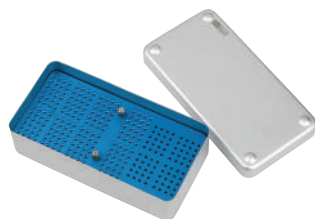


LARGE OBLONG TYPE D

• ITEM #812-007



- Organizer for Hand & Rotary Files.
- Holds 192 Hand Instruments, 80 Rotary Instruments.
- Removable Insert for Cleaning.
- Dimensions: 205×53×105m/m (W×H×D)



SMALL COMBI TYPE E

• ITEM #816-050



- A Compact Organizer for Hand & Rotary Files.
- Holds 72 Endo Instruments.
- Removable Insert for Cleaning.
- Dimensions: 105×52×44m/m (W×H×D)



ENDO GRIP(MINI)

• ITEM #833-001



- Commonly Used for Cleaning Files.
- Holds sponge or gauze.
- Available in Blue.
- Diameter: 40m/m, Height: 35m/m



ENDO CLEANER

• ITEM #834-001 Open

• ITEM #834-002 Closed



- Commonly Used for Cleaning and sterilizing Files.
- Top unscrews for easy replacement of Gauze.
- Diameter: 40m/m, Height: 30m/m



PROPHY BRUSH

- ITEM #950-101 : Latch Type
- ITEM #950-102 : Screw Type
- Packed 144 brushes
- Diameter Latch Type : 4.48mm
- Screw Type : 4.48mm



Latch Type (PB - 001)



Screw Type (PB - 002)

PROPHY BRUSH LARGE HEAD LATCH TYPE

- ITEM #950-121
- Packed 144 brushes
- Diameter : 5.98mm



(PB - 005)

PROPHY RUBBER CUP RIBBED & WEBBED

- ITEM #950-201 : Latch Type
- ITEM #950-202 : Screw Type
- Packed 144 cups



Latch Type (RC - 001)



Screw Type (RC - 002)

PROPHY RUBBER CUP WEBBED

- ITEM #950-211 : Latch Type
- ITEM #950-212 : Screw Type
- Packed 144 cups



Latch Type (RC - 003)



Screw Type (RC - 004)

PROPHY RUBBER CUP WEBBED WITH WASHER LATCH TYPE

- ITEM #950-241
- Packed 144 cups



(RC - 009)

PROPHY RUBBER CUP SNAP-ON RIBBED & WEBBED

- ITEM #950-253
- Packed 144 cups



(RC - 012)

ENDO SHAPING BLOCK

- ITEM #943-101
- Clear acrylic blocks
- Ideal for training bloc for shaping root canals with rotary files.
- Pkg of 10





www.diadent.co.kr

ISO 13485

DiaDent's Network

DiaDent Group International(Korea & International)

16, Osongsaengmyeong 4-ro, Osong-eup, Heungdeok-gu Cheongju-si Chungcheong buk-do,
28161, South Korea
Tel)82-43-266-2315 Fax)82-43-262-8658
E-mail: diadent@diadent.co.kr

DiaDent Group International Inc. (Canada & USA)

11-3871 North Fraser Way, Burnaby B.C, Canada V5J 5G6
Tel)1-604-451-8851 Fax)1-604-451-8865
E-mail: diadent@diadent.com

DiaDent Europe B.V (Europe)

Antennestraat 70, 1322 AS Almere, the Netherlands
Tel)31-36-549-8607 Fax)31-36-536-7317
E-mail: diadent@diadent europe.com

REF

2019/1/14[REV.0]